

Effective mass of nonrelativistic quantum electrodynamics

Fumio Hiroshima* and K. R. Ito†

January 10, 2006

Abstract

The effective mass m_{eff} of the nonrelativistic quantum electrodynamics with spin 1/2 is investigated. Let $m_{\text{eff}}/m = 1 + a_1(\Lambda/m)e^2 + a_2(\Lambda/m)e^4 + \mathcal{O}(e^6)$, where m denotes the bare mass. $a_1(\Lambda/m) \sim \log(\Lambda/m)$ as $\Lambda \rightarrow \infty$ is well known. Also $a_2(\Lambda/m) \sim \sqrt{\Lambda/m}$ is established for a spinless case. It is shown that $a_2(\Lambda/m) \sim (\Lambda/m)^2$ in the case including spin 1/2.

1 Introduction

1.1 Quantum electrodynamics

In this review we study an translation-invariant Hamiltonian minimally coupled to a quantized radiation field in the nonrelativistic quantum electrodynamics. Before going to discuss our problem, we informally derive our Hamiltonian from physical point of view. The conventional quantum electrodynamics is investigated through the Lagrangian density:

$$\mathcal{L}_{\text{QED}}(\mathbf{x}) = \bar{\psi}(\mathbf{x})(i\gamma^\mu \partial_\mu - m)\psi(\mathbf{x}) - \frac{1}{4}F_{\mu\nu}(\mathbf{x})F^{\mu\nu}(\mathbf{x}) - e\bar{\psi}(\mathbf{x})\gamma^\mu\psi(\mathbf{x})A_\mu(\mathbf{x}),$$

where $\mathbf{x} = (x_0, \mathbf{x}) \in \mathbf{R} \times \mathbf{R}^3$, γ^μ , $\mu = 0, 1, 2, 3$, denotes 4×4 gamma matrices, ψ the spinor given by $\psi = (\psi_0, \psi_1, \psi_2, \psi_3)^T$ and $\bar{\psi} = (\bar{\psi}_0, \bar{\psi}_1, \bar{\psi}_2, \bar{\psi}_3)\gamma^0$, $A_\mu(\mathbf{x})$ a radiation field with $F_{\mu\nu} := \partial_\mu A_\nu - \partial_\nu A_\mu$, and m, e are the mass and the charge of an electron, respectively. The effective mass m_{eff} is given through two point function $\int_{\mathbf{R}^4} (\Psi, T[\psi(\mathbf{x})\bar{\psi}(0)]\Psi) e^{i(x^0 p^0 - \mathbf{x} \cdot \mathbf{p})} dx$ and the effective charge through the two point function $\int_{\mathbf{R}^4} (\Psi, T[A_\mu(\mathbf{x})A_\nu(0)]\Psi) e^{i(x^0 p^0 - \mathbf{x} \cdot \mathbf{p})} dx$, where Ψ denotes a ground state of the Hamiltonian derived from \mathcal{L}_{QED} and T the time ordered product. In the perturbative quantum electrodynamics, Feynman diagrammatically, the e^2 and e^4 terms of the effective mass is computed from the self-energy of electron, e.g.,

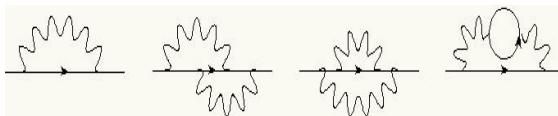


Figure 1: Electron self-energy

*Faculty of Mathematics, Kyushu University, Fukuoka 812-8581, Japan.

†Department of Math. and Phys., Setsunan University, 572-8508, Osaka, Japan

and the effective charge from the self-energy of photon, e.g.,

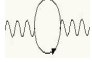


Figure 2: Photon self-energy

One can interpret the photon self-energy diagram as the emission of the pairs of virtual electrons and positrons. All these argument is successive from the physical point of view, but perturbative and implicit divergences are included.

1.2 Informal derivation of nonrelativistic quantum electrodynamics

In this note we want to discuss the quantum electrodynamics nonperturbatively, but we assume that **(1) an electron is in low energy, (2) we take the Coulomb gauge, (3) we introduce a form factor φ of an electron.**

(1) implies that *no* emission of pairs of virtual electrons and positrons, i.e., there is no loop  such as in Fig.2, then in our model the effective charge equals to the bare charge and the number of electrons is fixed. From (2) the theory is not relatively covariant. From (3) it follows that the density of the electron charge is smoothly localised around the position of the electron and the ultraviolet divergence does not exist. Taking into account of (1)-(3), we modify the quantum electrodynamics as follows. Let $E(t, x)$ and $B(t, x)$, $(t, x) \in \mathbf{R} \times \mathbf{R}^3$, be an electric field and a magnetic field respectively, and $q(t)$ the position of an electron at time $t \in \mathbf{R}$. The Maxwell equation with form factor φ is given by

$$\begin{aligned}\dot{B} &= -\nabla \times E, \\ \nabla \cdot B &= 0, \\ \dot{E} &= \nabla \times B - e\varphi(\cdot - q(t))\dot{q}(t), \\ \nabla \cdot E &= e\varphi(\cdot - q(t)).\end{aligned}$$

Here $\dot{X} = dX/dt$. Let $(J(t, x), \rho(t, x)) = (e\varphi(x - q(t))\dot{q}(t), e\varphi(x - q(t)))$. Then the Lagrangian density of the nonrelativistic quantum electrodynamics under consideration is given by

$$\mathcal{L}_{\text{NRQED}}(t, x) = \frac{1}{2}m\dot{q}(t)^2 + \frac{1}{2}(E(t, x)^2 - B(t, x)^2) + J(t, x) \cdot A(t, x) - \rho(t, x)\phi(t, x),$$

where A and ϕ are a vector potential and a scalar potential related to E and B such as

$$E = -\dot{A} - \nabla\phi, \quad B = \nabla \times A.$$

Let $L_{\text{NRQED}} = \int \mathcal{L}_{\text{NRQED}}(t, x)dx$. Then the conjugate momenta are given

$$p(t) := \frac{\partial L_{\text{NRQED}}}{\partial \dot{q}} = m\dot{q}(t) + e \int A(t, x)\varphi(x - q(t))dx, \quad \Pi(t, x) := \frac{\delta L_{\text{NRQED}}}{\delta \dot{A}} = \dot{A}(t, x).$$

Then the Hamiltonian is given through the Legendre transformation as

$$\begin{aligned} H_{\text{NRQED}} &= p(t) \cdot \dot{q}(t) + \int \dot{A}(t, x) \Pi(t, x) dx - L_{\text{NRQED}} \\ &= \frac{1}{2m} \left(p(t) - e \int A(t, x) \varphi(x - q(t)) dx \right)^2 + V(q) + \frac{1}{2} \int \left\{ \dot{A}(t, x)^2 + (\nabla \times A(t, x))^2 \right\} dx \end{aligned}$$

where V is a smeared external potential given by

$$V(q) := \frac{1}{2} e^2 \int \frac{\varphi(q - y) \varphi(q - y')}{4\pi |y - y'|} dy dy'.$$

In the next subsection we quantize H_{NRQED} with spin 1/2 and total momentum $p \in \mathbf{R}^3$, which is denoted by $H(p)$ and is called the Pauli-Fierz Hamiltonian, in the rigorous way from mathematical point of view.

1.3 Non-relativistic quantum electrodynamics

Let \mathcal{F} be the boson Fock space given by $\mathcal{F} \equiv \bigoplus_{n=0}^{\infty} \left[\otimes_s^n L^2(\mathbf{R}^3 \times \{1, 2\}) \right]$, where \otimes_s^n denotes the n -fold symmetric tensor product with $\otimes_s^0 L^2(\mathbf{R}^3 \times \{1, 2\}) \equiv \mathbf{C}$. The Fock vacuum $\Omega \in \mathcal{F}$ is defined by $\Omega \equiv \{1, 0, 0, \dots\}$. Let $a(f)$ be the creation operator and $a^*(f)$ the annihilation operator on \mathcal{F} defined by

$$(a^*(f)\Psi)^{(n+1)} \equiv \sqrt{n+1} S_{n+1}(f \otimes \Psi^{(n)}), \quad f \in L^2(\mathbf{R}^3 \times \{1, 2\}),$$

and $a(f) = [a^*(\bar{f})]^*$, where S_n denotes the symmetrizer. The scalar product on \mathcal{K} is denoted by $(f, g)_{\mathcal{K}}$ which is linear in g and anti-linear in f . a and a^* satisfy canonical commutation relations:

$$[a(f), a^*(g)] = (\bar{f}, g)_{L^2(\mathbf{R}^3 \times \{1, 2\})}, \quad [a(f), a(g)] = 0, \quad [a^*(f), a^*(g)] = 0.$$

We write as $\sum_{j=1,2} \int a^\sharp(k, j) f(k, j) dk$ for $a^\sharp(f)$ with a formal kernel $a^\sharp(k, j)$. Let T be a self-adjoint operator on $L^2(\mathbf{R}^3)$. We define $\Gamma(e^{itT}) a^*(f_1) \cdots a^*(f_n) \Omega \equiv a^*(e^{itT} f_1) \cdots a^*(e^{itT} f_n) \Omega$. Thus $\Gamma(e^{itT})$ turns out to be a strongly continuous one-parameter unitary group in t , which implies that there exists a self-adjoint operator $d\Gamma(T)$ on \mathcal{F} such that $\Gamma(e^{itT}) = e^{itd\Gamma(T)}$ for $t \in \mathbf{R}$. We define a Hilbert space \mathcal{H} by $\mathcal{H} \equiv \mathbf{C}^2 \otimes \mathcal{F}$. The Pauli-Fierz Hamiltonian with total momentum $p = (p_1, p_2, p_3) \in \mathbf{R}^3$ is given by a symmetric operator on \mathcal{H} :

$$H(p) \equiv \frac{1}{2m} \left\{ \sum_{\mu=1}^3 \sigma_\mu \otimes (p_\mu - P_{f_\mu} - eA_{\hat{\varphi}_\mu}) \right\}^2 + 1 \otimes H_f,$$

where $m > 0$ and $e \in \mathbf{R}$ denote the mass and the charge of an electron, respectively, $\sigma \equiv (\sigma_1, \sigma_2, \sigma_3)$ the 2×2 Pauli-matrices given by $\sigma_1 \equiv \begin{pmatrix} 0 & 1 \\ 1 & 0 \end{pmatrix}$, $\sigma_2 \equiv \begin{pmatrix} 0 & -i \\ i & 0 \end{pmatrix}$,

$\sigma_3 \equiv \begin{pmatrix} 1 & 0 \\ 0 & -1 \end{pmatrix}$, and the free Hamiltonian H_f , the momentum operator P_f and quantum radiation field $A_{\hat{\varphi}_\mu}$ are given by

$$\begin{aligned} H_f &\equiv d\Gamma(\omega), & P_{f\mu} &\equiv d\Gamma(k_\mu), \\ A_{\hat{\varphi}_\mu} &\equiv \frac{1}{\sqrt{2}} \sum_{j=1,2} \int \frac{\hat{\varphi}(k)}{\sqrt{\omega(k)}} e_\mu(k, j) (a^*(k, j) + a(k, j)) dk, & \mu &= 1, 2, 3. \end{aligned}$$

Here $e(k, j)$, $j = 1, 2$, denotes polarization vectors such that $|e(k, j)| = 1$, $e(k, 1) \cdot e(k, 2) = 0$, $k \cdot e(k, j) = 0$ and $e(k, 1) \times e(k, 2) = k/|k|$. We omit the tensor notation \otimes in what follows. Then

$$H(p) = \frac{1}{2m} (p - P_f - eA_{\hat{\varphi}})^2 + H_f - \frac{e}{2m} \sigma B_{\hat{\varphi}}, \quad p \in \mathbf{R}^3,$$

where $B_{\hat{\varphi}_\mu}$ denotes the quantum magnetic field given by

$$B_{\hat{\varphi}_\mu} \equiv \frac{i}{\sqrt{2}} \sum_{j=1,2} \int \frac{\hat{\varphi}(k)}{\sqrt{\omega(k)}} (k \times e(k, j))_\mu (a^*(k, j) - a(k, j)) dk.$$

Note that $[A_{\hat{\varphi}_\mu}, B_{\hat{\varphi}_\nu}] = 0$ for $\mu, \nu = 1, 2, 3$. The spectrum of $H(p)$ is studied in e.g., [1, 2] and see references in [5].

2 Mass renormalization

2.1 Main theorems

Let

$$T_m(e, p) \equiv \frac{1}{2} (p - P_f - eA_{\hat{\varphi}_m})^2 + H_f - \frac{e}{2} \sigma B_{\hat{\varphi}_m}, \quad p \in \mathbf{R}^3,$$

where

$$\hat{\varphi}_m(k) \equiv \hat{\varphi}(mk) = \begin{cases} 0, & |k| < \kappa/m, \\ 1/\sqrt{(2\pi)^3}, & \kappa/m \leq |k| \leq \Lambda/m, \\ 0, & |k| > \Lambda/m. \end{cases} \quad (1)$$

It is established in [4] that $T_m(e, p)$ is self-adjoint on $D(P_f^2) \cap D(H_f)$ for arbitrary $\Lambda > 0, m > 0, p \in \mathbf{R}^3, e \in \mathbf{R}$. Since $A_{\hat{\varphi}} \cong mA_{\hat{\varphi}_m}$, $B_{\hat{\varphi}} \cong mB_{\hat{\varphi}_m}$, $H_f \cong mH_f$ and $P_f \cong mP_f$, where $X \cong Y$ denotes the unitary equivalence, we have $H(p) \cong mT_m(e, (|p|/m)n_z)$, where $n_z = (0, 0, 1)$. Let $:X:$ be the Wick product of X . We define

$$H(e, \epsilon) \equiv :T_m(e, \epsilon n_z):, \quad \epsilon \in \mathbf{R}.$$

Set $E(e, \epsilon) \equiv \inf \sigma(H(e, \epsilon))$. It is established in [5] that there exist constants $e_0 > 0$ and $\epsilon_0 > 0$ such that for $(e, \epsilon) \in \mathcal{D}_a \equiv \{(e, \epsilon) \in \mathbf{R}^2 \mid |e| < e_0, |\epsilon| < \epsilon_0\}$, (1) the dimension of $\text{Ker}(H(e, \epsilon) - E(e, \epsilon))$ is two, (2) $E(e, \epsilon)$ is an analytic function of e^2 and ϵ^2 on \mathcal{D}_a , (3) there exists a strongly analytic ground state of $H(e, \epsilon)$. The effective mass m_{eff} is defined by

$$\frac{m}{m_{\text{eff}}} = \partial_\epsilon^2 E(e, \epsilon) \Big|_{\epsilon=0}.$$

From this it immediately follows that effective mass m_{eff} is an analytic function of e^2 on $\{e \in \mathbf{R}^3 \mid |e| < e_*\}$ with some $e_* > 0$. Set

$$m/m_{\text{eff}} = \sum_{n=0}^{\infty} a_n(\Lambda/m)e^{2n}.$$

The effective mass is investigated in e.g., [3, 5, 6, 8]. It is known and easily derived that

$$a_1(\Lambda/m) = \frac{8}{3\pi} \frac{1}{4\pi} \left(\int_{\kappa/m}^{\Lambda/m} \frac{1}{r+2} dr + \int_{\kappa/m}^{\Lambda/m} \frac{r^2}{(r+2)^3} dr \right).$$

Our next issue is to study $a_2(\Lambda/m)$.

Theorem 2.1 *There exist positive constants $c_2 < c_1$ such that $-c_1 \leq \lim_{\Lambda \rightarrow \infty} \frac{a_2(\Lambda/m)}{(\Lambda/m)^2} \leq -c_2$.*

2.2 Expansions

We set $A \equiv A_{\hat{\varphi}_m}$ and $B \equiv B_{\hat{\varphi}_m}$. Let us define H , E and φ_g by

$$H \equiv H(e, 0) = H_0 + eH_I + \frac{e^2}{2}H_{II}, \quad E \equiv E(e, 0) = \sum_{n=0}^{\infty} \frac{e^n}{n!} E_{(n)}, \quad \varphi_g \equiv \varphi_g(e, 0) = \sum_{n=0}^{\infty} \frac{e^n}{n!} \varphi_{(n)},$$

where $H_0 \equiv H_f + \frac{1}{2}P_f^2$, $H_I \equiv H_I^{(1)} + H_I^{(2)}$, $H_I^{(1)} = AP_f$, $H_I^{(2)} \equiv -\frac{1}{2}\sigma B$, and $H_{II} \equiv AA := A^+A^+ + 2A^+A^- + A^-A^-$. Here we put

$$A^+ \equiv \frac{1}{\sqrt{2}} \sum_{j=1,2} \int \frac{\hat{\varphi}_m(k)}{\sqrt{\omega(k)}} e(k, j) a^*(k, j) dk, \quad A^- \equiv \frac{1}{\sqrt{2}} \sum_{j=1,2} \int \frac{\hat{\varphi}_m(k)}{\sqrt{\omega(k)}} e(k, j) a(k, j) dk.$$

We can see that $E_{(0)} = E_{(2n+1)} = 0$, $n = 0, 1, 2, 3, \dots$, and

$$\frac{1}{2}E_{(2)} = (\varphi_{(0)}, H_I^{(2)} \varphi_{(1)})_{\mathcal{H}} = -(\varphi_{(0)}, \left(-\frac{\sigma B}{2}\right) \frac{1}{H_0} \left(-\frac{\sigma B}{2}\right) \varphi_{(0)})_{\mathcal{H}} \neq 0. \quad (2)$$

Note that $E_{(2)} \sim (\Lambda/m)^2$ as $\Lambda \rightarrow \infty$. Moreover

$$\begin{aligned} \varphi_{(0)} &= \begin{pmatrix} 1 \\ 0 \end{pmatrix} \otimes \Omega, \\ \varphi_{(1)} &= -\frac{1}{H_0} \left(-\frac{\sigma B}{2}\right) \varphi_{(0)}, \\ \varphi_{(2)} &= \frac{1}{H_0} (-H_{II}) \varphi_{(0)} + 2 \frac{1}{H_0} (P_f \cdot A) \frac{1}{H_0} \left(-\frac{\sigma B}{2}\right) \varphi_{(0)} \\ &\quad + 2 \frac{1}{H_0} \left\{ \left(-\frac{\sigma B}{2}\right) \frac{1}{H_0} \left(-\frac{\sigma B}{2}\right) - \left(-\frac{E_{(2)}}{2}\right) \right\} \varphi_{(0)}, \\ \varphi_{(3)} &= -3 \frac{1}{H_0} (-H_{II}) \frac{1}{H_0} \left(-\frac{\sigma B}{2}\right) \varphi_{(0)} + 3 \frac{1}{H_0} (P_f \cdot A) \frac{1}{H_0} (-H_{II}) \varphi_{(0)} \end{aligned}$$

$$\begin{aligned}
& +6 \frac{1}{H_0} (P_f \cdot A) \frac{1}{H_0} (P_f \cdot A) \frac{1}{H_0} \left(-\frac{\sigma B}{2} \right) \varphi_{(0)} \\
& +6 \frac{1}{H_0} (P_f \cdot A) \frac{1}{H_0} \left\{ \left(-\frac{\sigma B}{2} \right) \frac{1}{H_0} \left(-\frac{\sigma B}{2} \right) - \left(-\frac{E_{(2)}}{2} \right) \right\} \varphi_{(0)} \\
& +3 \frac{1}{H_0} \left(-\frac{\sigma B}{2} \right) \frac{1}{H_0} (-H_{II}) \varphi_{(0)} + 6 \frac{1}{H_0} \left(-\frac{\sigma B}{2} \right) \frac{1}{H_0} (P_f \cdot A) \frac{1}{H_0} \left(-\frac{\sigma B}{2} \right) \varphi_{(0)} \\
& +6 \frac{1}{H_0} \left(-\frac{\sigma B}{2} \right) \frac{1}{H_0} \left\{ \left(-\frac{\sigma B}{2} \right) \frac{1}{H_0} \left(-\frac{\sigma B}{2} \right) - \left(-\frac{E_{(2)}}{2} \right) \right\} \varphi_{(0)}.
\end{aligned}$$

Although formula

$$\frac{m}{m_{\text{eff}}} = 1 - \frac{2}{3} \sum_{\mu=1}^3 \frac{((P_f + eA)_\mu \varphi_g, (H - E)^{-1} (P_f + eA)_\mu \varphi_g)_{\mathcal{H}}}{(\varphi_g, \varphi_g)_{\mathcal{H}}} \quad (3)$$

is well known, it is not useful for our task, since expansion of $(H - E)^{-1}$ in e leads us to a complicated operator domain argument. Then, instead of (3), it is established in [6] that $\varphi'_g \equiv s - \partial \varphi_g(e, \epsilon) / \partial \epsilon|_{\epsilon=0}$ satisfies that $(P_f + eA)_3 \varphi_g \in D((H - E)^{-1})$ with $\varphi'_g = (H - E)^{-1} (P_f + eA)_3 \varphi_g$ and

$$\frac{m}{m_{\text{eff}}} = 1 - 2 \frac{(\varphi_g, (P_f + eA)_3 \varphi'_g)_{\mathcal{H}}}{(\varphi_g, \varphi_g)_{\mathcal{H}}}. \quad (4)$$

Using (4) in [5] it is proven that the effective mass is expanded as

$$\frac{m}{m_{\text{eff}}} = 1 - \frac{2}{3} c_1 (\Lambda/m) e^2 - \frac{2}{3} c_2 (\Lambda/m) e^4 + \mathcal{O}(e^6), \quad (5)$$

or

$$\frac{m_{\text{eff}}}{m} = 1 + \frac{2}{3} c_1 (\Lambda/m) e^2 + \left(\frac{2}{3} c_2 (\Lambda/m) + \left(\frac{2}{3} \right)^2 c_1 (\Lambda/m)^2 \right) e^4 + \mathcal{O}(e^6), \quad (6)$$

where

$$\begin{aligned}
c_1 (\Lambda/m) &\equiv \sum_{\mu=1}^3 (\Psi_1^\mu, \tilde{H}_0 \Psi_1^\mu)_{\mathcal{H}}, \\
c_2 (\Lambda/m) &\equiv \sum_{\mu=1}^3 \left\{ (\Psi_1^\mu, \tilde{H}_2 \Psi_1^\mu)_{\mathcal{H}} - (\Psi_1^\mu, \tilde{H}_0 \Psi_1^\mu)_{\mathcal{H}} (\varphi_{(1)}, \varphi_{(1)})_{\mathcal{H}} + 2\Re(\Psi_2^\mu, \tilde{H}_1 \Psi_1^\mu)_{\mathcal{H}} \right. \\
&\quad \left. + (\Psi_2^\mu, \tilde{H}_0 \Psi_2^\mu)_{\mathcal{H}} + 2\Re(\Psi_3^\mu, \tilde{H}_0 \Psi_1^\mu)_{\mathcal{H}} \right\}. \quad (7)
\end{aligned}$$

Here

$$\Psi_n^\mu \equiv \frac{1}{(n-1)!} A_\mu \varphi_{(n-1)} + \frac{1}{n!} P_{f\mu} \varphi_{(n)}, \quad n = 1, 2, 3, \quad \mu = 1, 2, 3,$$

and $\tilde{H}_0 \equiv H_1$, $\tilde{H}_1 \equiv H_2 + H_3$, $\tilde{H}_2 \equiv H_4 + H_5 + H_6 + H_7 + H_8$, where we put

$$H_1 = \frac{1}{H_0}, \quad H_2 = -\frac{1}{H_0} (P_f \cdot A) \frac{1}{H_0}, \quad H_3 = -\frac{1}{H_0} \left(-\frac{\sigma B}{2} \right) \frac{1}{H_0},$$

$$\begin{aligned}
H_4 &= \frac{1}{2} \frac{1}{H_0} (-H_{\text{II}}) \frac{1}{H_0}, & H_5 &= \frac{1}{H_0} (P_{\text{f}} \cdot A) \frac{1}{H_0} (P_{\text{f}} \cdot A) \frac{1}{H_0}, \\
H_6 &= \frac{1}{H_0} \left(-\frac{\sigma B}{2} \right) \frac{1}{H_0} (P_{\text{f}} \cdot A) \frac{1}{H_0}, & H_7 = H_6^* &= \frac{1}{H_0} (P_{\text{f}} \cdot A) \frac{1}{H_0} \left(-\frac{\sigma B}{2} \right) \frac{1}{H_0}, \\
H_8 &= \frac{1}{H_0} \left\{ \left(-\frac{\sigma B}{2} \right) \frac{1}{H_0} \left(-\frac{\sigma B}{2} \right) - \left(-\frac{E_{(2)}}{2} \right) \right\} \frac{1}{H_0}.
\end{aligned}$$

From above expressions of $\varphi_{(1)}, \varphi_{(2)}, \varphi_{(3)}$, it follows that for $\mu = 1, 2, 3$,

$$\Psi_1^\mu \equiv \Phi_1^\mu + \Phi_2^\mu, \quad \Psi_2^\mu \equiv \sum_{i=2}^6 \Phi_i^\mu, \quad \Psi_3^\mu \equiv \sum_{i=7}^{16} \Phi_i^\mu,$$

where

$$\begin{aligned}
\Phi_1^\mu &= A_\mu^+ \varphi_{(0)} & \Phi_2^\mu &= \frac{1}{2} P_{\text{f}\mu} \frac{1}{H_0} \sigma B^+ \varphi_{(0)} & \Phi_3^\mu &= \frac{1}{2} A_\mu \frac{1}{H_0} \sigma B^+ \varphi_{(0)} \\
\Phi_4^\mu &= -\frac{1}{2} P_{\text{f}\mu} \frac{1}{H_0} A^+ A^+ \varphi_{(0)} & \Phi_5^\mu &= -\frac{1}{2} P_{\text{f}\mu} \frac{1}{H_0} (P_{\text{f}} \cdot A) \frac{1}{H_0} \sigma B^+ \varphi_{(0)} \\
\Phi_6^\mu &= \frac{1}{4} P_{\text{f}\mu} \frac{1}{H_0} \sigma B^+ \frac{1}{H_0} \sigma B^+ \varphi_{(0)} & \Phi_7^\mu &= -\frac{1}{2} A_\mu \frac{1}{H_0} A^+ A^+ \varphi_{(0)} \\
\Phi_8^\mu &= -\frac{1}{2} A_\mu \frac{1}{H_0} (P_{\text{f}} \cdot A) \frac{1}{H_0} \sigma B^+ \varphi_{(0)} & \Phi_9^\mu &= \frac{1}{4} A_\mu \frac{1}{H_0} \sigma B^+ \frac{1}{H_0} \sigma B^+ \varphi_{(0)} \\
\Phi_{10}^\mu &= -\frac{1}{4} P_{\text{f}\mu} \frac{1}{H_0} :AA: \frac{1}{H_0} \sigma B^+ \varphi_{(0)} & \Phi_{11}^\mu &= -\frac{1}{2} P_{\text{f}\mu} \frac{1}{H_0} (P_{\text{f}} \cdot A) \frac{1}{H_0} A^+ A^+ \varphi_{(0)} \\
\Phi_{12}^\mu &= -\frac{1}{2} P_{\text{f}\mu} \frac{1}{H_0} (P_{\text{f}} \cdot A) \frac{1}{H_0} (P_{\text{f}} \cdot A) \frac{1}{H_0} \sigma B^+ \varphi_{(0)} & \Phi_{13}^\mu &= \frac{1}{4} P_{\text{f}\mu} \frac{1}{H_0} (P_{\text{f}} \cdot A) \frac{1}{H_0} \sigma B^+ \frac{1}{H_0} \sigma B^+ \varphi_{(0)} \\
\Phi_{14}^\mu &= \frac{1}{4} P_{\text{f}\mu} \frac{1}{H_0} \sigma B \frac{1}{H_0} A^+ A^+ \varphi_{(0)} & \Phi_{15}^\mu &= \frac{1}{4} P_{\text{f}\mu} \frac{1}{H_0} \sigma B \frac{1}{H_0} (P_{\text{f}} \cdot A) \frac{1}{H_0} \sigma B^+ \varphi_{(0)} \\
\Phi_{16}^\mu &= -\frac{1}{8} P_{\text{f}\mu} \frac{1}{H_0} \sigma B \frac{1}{H_0} \sigma B^+ \frac{1}{H_0} \sigma B^+ \varphi_{(0)}
\end{aligned}$$

Substituting H_1, \dots, H_8 and $\Phi_1^\mu, \dots, \Phi_{16}^\mu$ into (7), we see that

$$\begin{aligned}
c_2(\Lambda/m) &= \sum_{\mu=1}^3 \left\{ \left(\sum_{i=1}^2 \Phi_i^\mu, \sum_{\ell=4}^8 H_\ell \sum_{i=1}^2 \Phi_i^\mu \right) \mathcal{H} + \left(\sum_{i=1}^2 \Phi_i^\mu, H_1 \sum_{i=1}^2 \Phi_i^\mu \right) \mathcal{H} \right. \\
&\quad \left. \left(\sum_{i=3}^6 \Phi_i^\mu, (H_2 + H_3) \sum_{i=1}^2 \Phi_i^\mu \right) \mathcal{H} + \left(\sum_{i=3}^6 \Phi_i^\mu, H_1 \sum_{i=3}^6 \Phi_i^\mu \right) \mathcal{H} + \left(\sum_{i=7}^{16} \Phi_i^\mu, H_1 \sum_{i=1}^2 \Phi_i^\mu \right) \mathcal{H} \right\}. \quad (8)
\end{aligned}$$

From (8) it follows that $c_2(\Lambda/m)$ is decomposed into 76 terms. Fortunately it is, however, enough to consider terms containing even number of σB 's, since the terms with odd number of σB vanishes by a symmetry. See Fig. 3-7.

No.	Term	σB	P_f	$\frac{1}{H_0}$	Order
(1)	$-(\Phi_1^\mu, H_1 \Phi_1^\mu)(\varphi_{(1)}, \varphi_{(1)})\mathcal{H}$	0	0	1	$[\log(\Lambda/m)]^2$
(2)	$-(\Phi_2^\mu, H_1 \Phi_2^\mu)(\varphi_{(1)}, \varphi_{(1)})\mathcal{H}$	2	2	3	$[\log(\Lambda/m)]^2$

Figure 3: $(\sum_{i=1}^2 \Phi_i^\mu, H_1 \sum_{i=1}^2 \Phi_i^\mu)\mathcal{H}$

No.	Term	σB	P_f	$\frac{1}{H_0}$	Order
(3)	$(\Phi_3^\mu, H_1 \Phi_3^\mu)$	2	0	3	$[\log(\Lambda/m)]^2$
(4)	$(\Phi_5^\mu, H_1 \Phi_3^\mu)$	2	2	4	$[\log(\Lambda/m)]^2$
(5)	$(\Phi_3^\mu, H_1 \Phi_5^\mu)$	2	2	4	$[\log(\Lambda/m)]^2$
(6)	$(\Phi_4^\mu, H_1 \Phi_4^\mu)$	0	2	3	$+\sqrt{\Lambda/m}$
(7)	$(\Phi_6^\mu, H_1 \Phi_4^\mu)$	2	2	4	$-\sqrt{\Lambda/m}$
(8)	$(\Phi_4^\mu, H_1 \Phi_6^\mu)$	2	2	4	$-\sqrt{\Lambda/m}$
(9)	$(\Phi_5^\mu, H_1 \Phi_5^\mu)$	2	4	5	$+\sqrt{\Lambda/m}$
(10)	$(\Phi_6^\mu, H_1 \Phi_6^\mu)$	4	2	5	$[\log(\Lambda/m)]^2$

Figure 4: $(\sum_{i=3}^6 \Phi_i^\mu, H_1 \sum_{i=3}^6 \Phi_i^\mu)\mathcal{H}$

No.	Term	σB	P_f	$\frac{1}{H_0}$	Order
(11)	$(\Phi_1^\mu, H_4 \Phi_1^\mu)$	0	0	2	$[\log(\Lambda/m)]^2$
(12)	$(\Phi_2^\mu, H_4 \Phi_2^\mu)$	2	2	4	$[\log(\Lambda/m)]^2$
(13)	$(\Phi_1^\mu, H_5 \Phi_1^\mu)$	0	2	3	$\log(\Lambda/m)$
(14)	$(\Phi_2^\mu, H_5 \Phi_2^\mu)$	2	4	5	$[\log(\Lambda/m)]^2$
(15)	$(\Phi_2^\mu, H_6 \Phi_1^\mu)$	2	2	4	$[\log(\Lambda/m)]^2$
(16)	$(\Phi_1^\mu, H_6 \Phi_2^\mu)$	2	2	4	$[\log(\Lambda/m)]^2$
(17)	$(\Phi_2^\mu, H_7 \Phi_1^\mu)$	2	2	4	$[\log(\Lambda/m)]^2$
(18)	$(\Phi_1^\mu, H_7 \Phi_2^\mu)$	2	2	4	$[\log(\Lambda/m)]^2$
(19)	$(\Phi_1^\mu, H_8 \Phi_1^\mu)$	2	0	3	$[\log(\Lambda/m)]^2$
(20)	$(\Phi_2^\mu, H_8 \Phi_2^\mu)$	4	2	5	$[\log(\Lambda/m)]^2$

Figure 5: $(\sum_{i=1}^2 \Phi_i^\mu, \sum_{\ell=4}^8 H_\ell \sum_{i=1}^2 \Phi_i^\mu)\mathcal{H}$

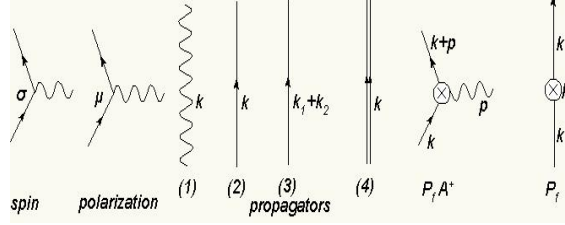
No.	Term	σB	P_f	$\frac{1}{H_0}$	Order
(21)	$(\Phi_4^\mu, H_2 \Phi_1^\mu)$	0	2	3	$\log(\Lambda/m)$
(22)	$(\Phi_6^\mu, H_2 \Phi_1^\mu)$	2	2	4	$[\log(\Lambda/m)]^2$
(23)	$(\Phi_3^\mu, H_2 \Phi_2^\mu)$	2	2	4	$[\log(\Lambda/m)]^2$
(24)	$(\Phi_5^\mu, H_2 \Phi_2^\mu)$	2	4	5	$\sqrt{\Lambda/m}$
(25)	$(\Phi_3^\mu, H_3 \Phi_1^\mu)$	2	0	4	$[\log(\Lambda/m)]^2$
(26)	$(\Phi_5^\mu, H_3 \Phi_1^\mu)$	2	2	4	$[\log(\Lambda/m)]^2$
(27)	$(\Phi_4^\mu, H_3 \Phi_2^\mu)$	2	2	4	$\sqrt{\Lambda/m}$
(28)	$(\Phi_6^\mu, H_3 \Phi_2^\mu)$	4	2	5	$-\Lambda/m$

Figure 6: $(\sum_{i=3}^6 \Phi_i^\mu, (H_2 + H_3)(\sum_{i=1}^2 \Phi_i^\mu))_{\mathcal{H}}$

No.	Term	σB	P_f	$\frac{1}{H_0}$	Order
(29)	$(\Phi_7^\mu, H_1 \Phi_1^\mu)$	0	0	2	$[\log(\Lambda/m)]^2$
(30)	$(\Phi_9^\mu, H_1 \Phi_1^\mu)$	2	0	3	$[\log(\Lambda/m)]^2$
(31)	$(\Phi_{11}^\mu, H_1 \Phi_1^\mu)$	0	2	3	$= 0$
(32)	$(\Phi_{13}^\mu, H_1 \Phi_1^\mu)$	2	2	4	$= 0$
(33)	$(\Phi_{15}^\mu, H_1 \Phi_1^\mu)$	2	2	4	$= 0$
(34)	$(\Phi_8^\mu, H_1 \Phi_2^\mu)$	2	2	4	$[\log(\Lambda/m)]^2$
(35)	$(\Phi_{10}^\mu, H_1 \Phi_2^\mu)$	2	2	4	$\sqrt{\Lambda/m}$
(36)	$(\Phi_{12}^\mu, H_1 \Phi_2^\mu)$	2	4	5	$[\log(\Lambda/m)]^2$
(37)	$(\Phi_{14}^\mu, H_1 \Phi_2^\mu)$	2	2	4	$[\log(\Lambda/m)]^2$
(38)	$(\Phi_{16}^\mu, H_1 \Phi_2^\mu)$	4	2	5	$-(\Lambda/m)^2$

Figure 7: $(\sum_{i=7}^{16} \Phi_i^\mu, H_1 \sum_{i=1}^2 \Phi_i^\mu)_{\mathcal{H}}$

2.3 Feynman diagrams



$$\begin{aligned}
 \text{spin} &= \sigma B^+ = \sigma(k, j) = \sigma \cdot (k \times e(k, j)), \\
 \text{polarization} &= A_\mu = e_\mu(k, j), \\
 \text{propagator(1)} &= \frac{1}{2} \frac{1}{(2\pi)^3 \omega(k)}, \quad \text{propagator(2)} = \frac{1}{H_0} = \frac{1}{\omega(k_i) + |k_i|^2/2} \equiv \frac{1}{E_i}, \\
 \text{propagator(3)} &= \frac{1}{H_0} = \frac{1}{\omega(k_1) + \omega(k_2) + |k_1 + k_2|^2/2} \equiv \frac{1}{E_{12}}, \\
 \text{propagator(4)} &= \left(\frac{1}{H_0}\right)^2 = \left(\frac{1}{\omega(k) + |k|^2/2}\right)^2, \\
 (P_f \cdot A^+) &= k \cdot e(p, j), \quad P_{f\mu} = k_\mu.
 \end{aligned}$$

Figure 8: Items of diagrams

The 38 terms in Fig. 3-7 can be represented by Feynman diagrams. The items of diagrams are in Fig. 8.

Example 2.2 We compute $(\Phi_5^\mu, H_1 \Phi_5^\mu)$ as an example. Since

$$(\Phi_5^\mu, H_1 \Phi_5^\mu) = \frac{1}{4} (P_{f\mu} \frac{1}{H_0} (P_f \cdot A^+) \frac{1}{H_0} \sigma B^+ \varphi_{(0)}, \frac{1}{H_0} P_{f\mu} \frac{1}{H_0} (P_f \cdot A^+) \frac{1}{H_0} \sigma B^+ \varphi_{(0)}),$$

its diagram is given as in Fig. 9.

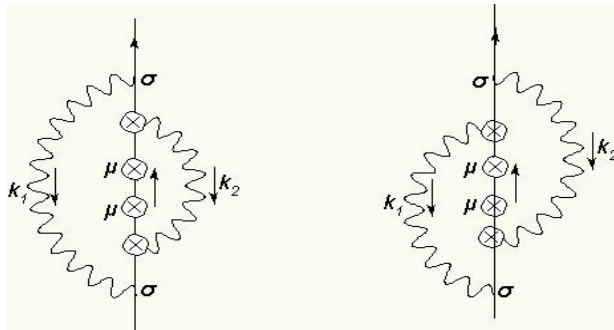


Figure 9: $(\Phi_5^\mu, H_1 \Phi_5^\mu)$

Then

$$\begin{aligned}
(\Phi_5^\mu, H_1 \Phi_5^\mu) &= \frac{1}{4} \int_{D^4} \frac{d^3 k_1 d^3 k_2}{(2\pi)^6 \omega_1 \omega_2} \\
&\times \langle \sigma_1 \frac{1}{E_1} (k_1 \cdot e_2) \frac{1}{E_{12}} (k_1 + k_2)_\mu \frac{1}{E_{12}} (k_1 + k_2)_\mu \frac{1}{E_{12}} \left((k_1 + k_2) \cdot e_2 \frac{1}{E_1} \sigma_1 + (k_1 + k_2) \cdot e_1 \frac{1}{E_2} \sigma_2 \right) \rangle \\
&= \int_{D^4} \frac{d^3 k_1 d^3 k_2}{(2\pi)^6 \omega_1 \omega_2} \frac{|k_1 + k_2|^2}{E_{12}^3} \left(\frac{\langle \sigma_1 \sigma_1 \rangle (k_1 \cdot e_2) (k_1 \cdot e_2)}{E_1^2} + \frac{\langle \sigma_1 \sigma_2 \rangle (k_1 \cdot e_2) (k_2 \cdot e_1)}{E_1 E_2} \right)
\end{aligned}$$

Here and in what follows we set $e_1 = e(k_1, j)$, $e_2 = e(k_2, j')$, $\sigma_1 = \sigma(k_1, j)$, $\sigma_2 = \sigma(k_2, j')$ and $\langle X \rangle$ denotes the expectation value of X : $\langle X \rangle = \left(\begin{pmatrix} 1 \\ 0 \end{pmatrix}, X \begin{pmatrix} 1 \\ 0 \end{pmatrix} \right)_{\mathbb{C}^2}$.

The diagrams consists of three kinds of diagrams; AA type, $A\sigma$ type and $\sigma\sigma$ type. In particular AA type corresponds to the spinless model discussed in [6].

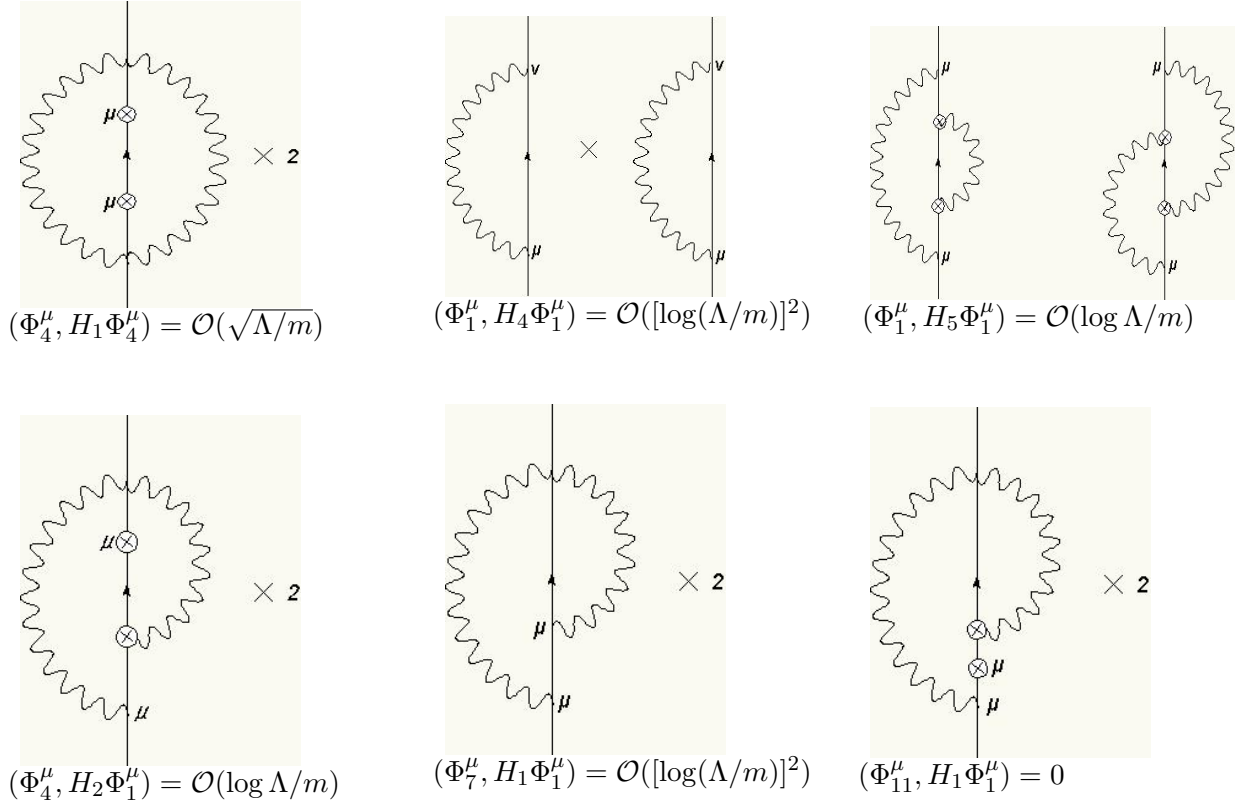


Figure 10: AA type Feynman diagrams

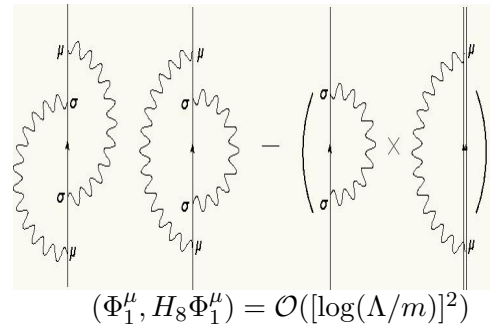
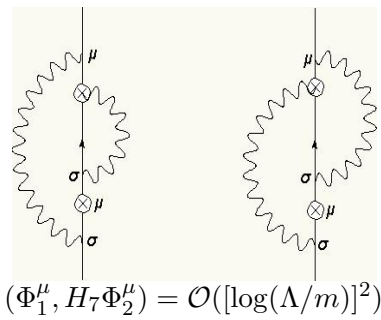
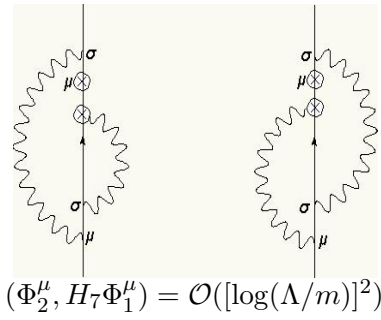
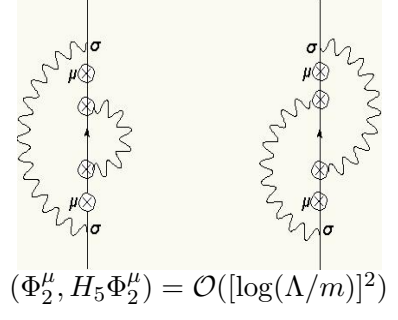
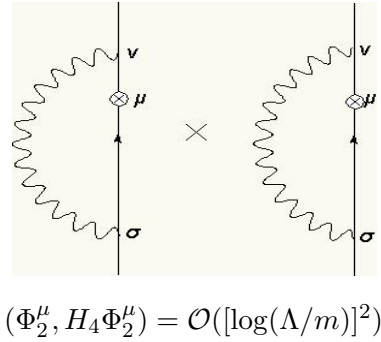
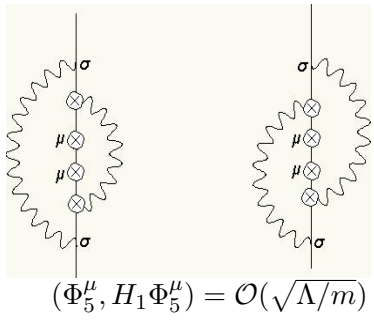
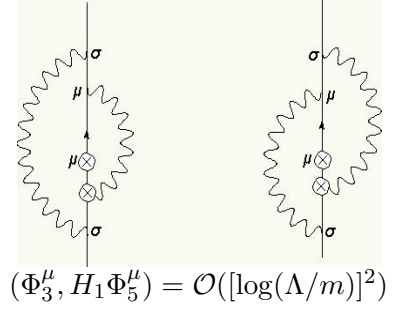
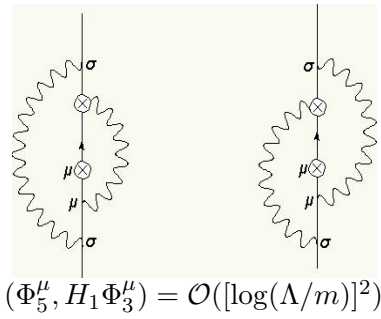
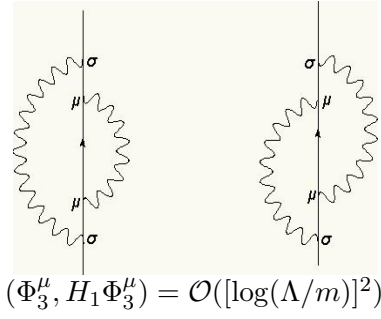


Figure 11: $A\sigma$ type Feynman diagrams

Two Feynman diagrams for $(\Phi_6^\mu, H_2 \Phi_1^\mu)$. The left diagram shows a vertical line with a wavy loop on the left. The right diagram shows a vertical line with a wavy loop on the right. Both diagrams have external lines labeled σ and μ .

$$(\Phi_6^\mu, H_2 \Phi_1^\mu) = \mathcal{O}([\log(\Lambda/m)]^2)$$

Two Feynman diagrams for $(\Phi_3^\mu, H_2 \Phi_2^\mu)$. The left diagram shows a vertical line with a wavy loop on the left. The right diagram shows a vertical line with a wavy loop on the right. Both diagrams have external lines labeled σ and μ .

$$(\Phi_3^\mu, H_2 \Phi_2^\mu) = \mathcal{O}([\log(\Lambda/m)]^2)$$

Two Feynman diagrams for $(\Phi_5^\mu, H_2 \Phi_2^\mu)$. The left diagram shows a vertical line with a wavy loop on the left. The right diagram shows a vertical line with a wavy loop on the right. Both diagrams have external lines labeled σ and μ .

$$(\Phi_5^\mu, H_2 \Phi_2^\mu) = \mathcal{O}(\sqrt{\Lambda/m})$$

Two Feynman diagrams for $(\Phi_3^\mu, H_3 \Phi_1^\mu)$. The left diagram shows a vertical line with a wavy loop on the left. The right diagram shows a vertical line with a wavy loop on the right. Both diagrams have external lines labeled σ and μ .

$$(\Phi_3^\mu, H_3 \Phi_1^\mu) = \mathcal{O}([\log(\Lambda/m)]^2)$$

Two Feynman diagrams for $(\Phi_5^\mu, H_3 \Phi_1^\mu)$. The left diagram shows a vertical line with a wavy loop on the left. The right diagram shows a vertical line with a wavy loop on the right. Both diagrams have external lines labeled σ and μ .

$$(\Phi_5^\mu, H_3 \Phi_1^\mu) = \mathcal{O}([\log(\Lambda/m)]^2)$$

A single Feynman diagram for $(\Phi_4^\mu, H_3 \Phi_2^\mu)$ with a factor of 2. The diagram shows a vertical line with a wavy loop on the left. It has external lines labeled σ and μ .

$$(\Phi_4^\mu, H_3 \Phi_2^\mu) = \mathcal{O}(\sqrt{\Lambda/m}) \times 2$$

Two Feynman diagrams for $(\Phi_9^\mu, H_1 \Phi_1^\mu)$. The left diagram shows a vertical line with a wavy loop on the left. The right diagram shows a vertical line with a wavy loop on the right. Both diagrams have external lines labeled σ and μ .

$$(\Phi_9^\mu, H_1 \Phi_1^\mu) = \mathcal{O}([\log(\Lambda/m)]^2)$$

Two Feynman diagrams for $(\Phi_{13}^\mu, H_1 \Phi_1^\mu)$. The left diagram shows a vertical line with a wavy loop on the left. The right diagram shows a vertical line with a wavy loop on the right. Both diagrams have external lines labeled σ and μ .

$$(\Phi_{13}^\mu, H_1 \Phi_1^\mu) = 0$$

Two Feynman diagrams for $(\Phi_{15}^\mu, H_1 \Phi_1^\mu)$. The left diagram shows a vertical line with a wavy loop on the left. The right diagram shows a vertical line with a wavy loop on the right. Both diagrams have external lines labeled σ and μ .

$$(\Phi_{15}^\mu, H_1 \Phi_1^\mu) = 0$$

Figure 12: $A\sigma$ type Feynman diagrams

Two Feynman diagrams for $(\Phi_8^\mu, H_1 \Phi_2^\mu)$. The left diagram shows a vertical line with a wavy loop on top, containing two vertices labeled μ and σ . The right diagram shows a vertical line with a wavy loop on the right, containing two vertices labeled μ and σ .

$$(\Phi_8^\mu, H_1 \Phi_2^\mu) = \mathcal{O}([\log(\Lambda/m)]^2)$$

Two Feynman diagrams for $(\Phi_{10}^\mu, H_1 \Phi_2^\mu)$. The left diagram shows a vertical line with a wavy loop on top, containing two vertices labeled μ and σ . The right diagram shows a vertical line with a wavy loop on the right, containing two vertices labeled μ and σ .

$$(\Phi_{10}^\mu, H_1 \Phi_2^\mu) = \mathcal{O}(\sqrt{\Lambda/m})$$

Two Feynman diagrams for $(\Phi_{12}^\mu, H_1 \Phi_2^\mu)$. The left diagram shows a vertical line with a wavy loop on top, containing two vertices labeled μ and σ . The right diagram shows a vertical line with a wavy loop on the right, containing two vertices labeled μ and σ .

$$(\Phi_{12}^\mu, H_1 \Phi_2^\mu) = \mathcal{O}([\log(\Lambda/m)]^2)$$

A Feynman diagram for $(\Phi_{14}^\mu, H_1 \Phi_2^\mu)$ with a factor of 2. It shows a vertical line with a wavy loop on top, containing two vertices labeled μ and σ .

$$(\Phi_{14}^\mu, H_1 \Phi_2^\mu) = \mathcal{O}([\log(\Lambda/m)]^2)$$

A Feynman diagram for $(\Phi_6^\mu, H_1 \Phi_4^\mu)$ with a factor of 2. It shows a vertical line with a wavy loop on top, containing two vertices labeled μ and σ .

$$(\Phi_6^\mu, H_1 \Phi_4^\mu) = \mathcal{O}(\sqrt{\Lambda/m})$$

A Feynman diagram for $(\Phi_4^\mu, H_1 \Phi_6^\mu)$ with a factor of 2. It shows a vertical line with a wavy loop on top, containing two vertices labeled μ and σ .

$$(\Phi_4^\mu, H_1 \Phi_6^\mu) = \mathcal{O}(\sqrt{\Lambda/m})$$

Two Feynman diagrams for $(\Phi_2^\mu, H_6 \Phi_1^\mu)$. The left diagram shows a vertical line with a wavy loop on top, containing two vertices labeled μ and σ . The right diagram shows a vertical line with a wavy loop on the right, containing two vertices labeled μ and σ .

$$(\Phi_2^\mu, H_6 \Phi_1^\mu) = \mathcal{O}([\log(\Lambda/m)]^2)$$

Two Feynman diagrams for $(\Phi_1^\mu, H_6 \Phi_2^\mu)$. The left diagram shows a vertical line with a wavy loop on top, containing two vertices labeled μ and σ . The right diagram shows a vertical line with a wavy loop on the right, containing two vertices labeled μ and σ .

$$(\Phi_1^\mu, H_6 \Phi_2^\mu) = \mathcal{O}([\log(\Lambda/m)]^2)$$

Two Feynman diagrams for $(\Phi_1^\mu, H_1 \Phi_1^\mu)$. The left diagram shows a vertical line with a wavy loop on top, containing two vertices labeled μ and σ . The right diagram shows a vertical line with a wavy loop on the right, containing two vertices labeled μ and σ .

$$(\Phi_1^\mu, H_1 \Phi_1^\mu) = \mathcal{O}([\log(\Lambda/m)]^2)$$

Figure 13: $A\sigma$ type Feynman diagrams

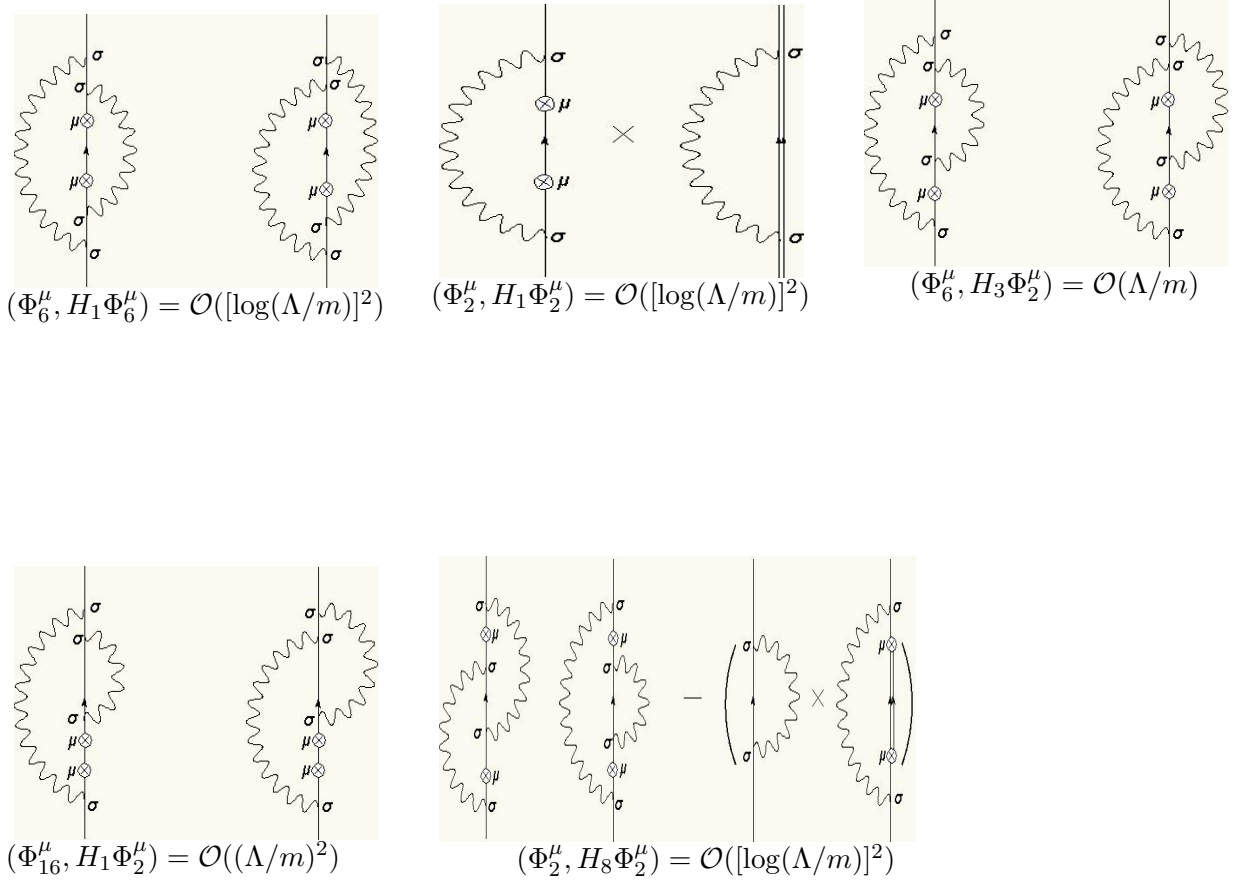


Figure 14: $\sigma\sigma$ type Feynman diagrams

2.4 Proof of Theorem 2.1

We shall prove Theorem 2.1. Note that the following formulas are useful.

Lemma 2.3 *It follows that*

$$e_i \cdot e_i = 2, \quad i = 1, 2, \quad (9)$$

$$(e_1 \cdot e_2)(e_1 \cdot e_2) = 1 + (\hat{k}_1 \cdot \hat{k}_2)^2, \quad (10)$$

$$(k_2 \cdot e_1)(k_2 \cdot e_1) = |k_2|^2(1 - (\hat{k}_1 \cdot \hat{k}_2)^2), \quad (11)$$

$$(k_1 \cdot e_2)(e_2 \cdot e_1)(e_1 \cdot k_2) = -(k_1, k_2)(1 - (\hat{k}_1 \cdot \hat{k}_2)^2), \quad (12)$$

$$\langle \sigma_i \sigma_i \rangle = 2|k_i|^2, \quad i = 1, 2, \quad (13)$$

$$\Re \langle \sigma_1 \sigma_2 \rangle (e_1 \cdot k_2)(k_1 \cdot e_2) = |k_1|^2 |k_2|^2 ((\hat{k}_1 \cdot \hat{k}_2)^2 - 1), \quad (14)$$

$$\Re\langle\sigma_1\sigma_2\rangle(e_1\cdot e_2) = 2|k_1||k_2|(\hat{k}_1\cdot\hat{k}_2), \quad (15)$$

$$\langle\sigma_1\sigma_2\sigma_2\sigma_1\rangle = 4|k_1|^2|k_2|^2, \quad (16)$$

$$\Re\langle\sigma_1\sigma_2\sigma_1\sigma_2\rangle = -2|k_1|^2|k_2|^2(1 - (\hat{k}_1\cdot\hat{k}_2)^2). \quad (17)$$

Proof: Note that

$$e_\mu(k,j)e_\nu(k,j) = (\delta_{\mu\nu} - \frac{k_\mu k_\nu}{|k|^2}), \quad (k \times e(k,j))_\mu e_\nu(k,j) = -\epsilon^{\mu\nu\alpha} k_\alpha, \quad \Re\langle\sigma_\mu\sigma_\nu\rangle = \delta_{\mu\nu}.$$

Here $\epsilon^{\alpha\beta\gamma}$ denotes the antisymmetric tensor with $\epsilon^{123} = +1$. In what follows, the summation over repeated index is understood. We see that

$$(1) \quad e_i \cdot e_i = e_\mu(k_i, j)e_\mu(k_i, j) = 2, \quad i = 1, 2,$$

$$(2) \quad (e_1 \cdot e_2)(e_1 \cdot e_2) = e_\mu(k_1, j)e_\mu(k_2, j')e_\nu(k_1, j)e_\nu(k_2, j') \\ = (\delta_{\mu\nu} - \frac{k_{1\mu}k_{1\nu}}{|k_1|^2})(\delta_{\mu\nu} - \frac{k_{2\mu}k_{2\nu}}{|k_2|^2}) = (3 - 1 - 1 + \frac{(\hat{k}_1\cdot\hat{k}_2)^2}{|k_1|^2|k_2|^2}) = 1 + (\hat{k}_1\cdot\hat{k}_2)^2,$$

$$(3) \quad (k_2 \cdot e_1)(k_2 \cdot e_1) = k_{2\mu}e_\mu(k_1, j)k_{2\nu}e_\nu(k_1, j) = k_{2\mu}k_{2\nu}(\delta_{\mu\nu} - \frac{k_{1\mu}k_{1\nu}}{|k_1|^2}) = |k_2|^2(1 - (\hat{k}_1\cdot\hat{k}_2)^2),$$

$$(4) \quad (k_1 \cdot e_2)(e_2 \cdot e_1)(e_1 \cdot k_2) = k_{2\mu}e_\mu(k_1, j)e_\lambda(k_1, j)e_\lambda(k_2, j')k_{1\nu}e_\nu(k_2, j') \\ = k_{2\mu}(\delta_{\mu\lambda} - \frac{k_{1\mu}k_{1\lambda}}{|k_1|^2})k_{1\nu}(\delta_{\lambda\nu} - \frac{k_{2\lambda}k_{2\nu}}{|k_2|^2}) = -(k_1, k_2)(1 - (\hat{k}_1\cdot\hat{k}_2)^2),$$

$$(5) \quad \Re\langle\sigma_1\sigma_1\rangle = \Re\langle\sigma_\mu\sigma_\nu\rangle(k_1 \times e(k_1, j))_\mu(k_1 \times e(k_1, j))_\nu = \delta_{\mu\nu}(k_1 \times e(k_1, j))_\mu(k_1 \times e(k_1, j))_\nu \\ = (k_1 \times e(k_1, j))_\mu(k_1 \times e(k_1, j))_\mu = |k_1|^2(|e(k_1, 1)|^2 + |e(k_1, 2)|^2) = 2|k_1|^2,$$

$$(6) \quad \Re\langle\sigma_1\sigma_2\rangle(e_1 \cdot k_2)(k_1 \cdot e_2) = \Re\langle\sigma_\mu\sigma_\nu\rangle(k_1 \times e(k_1, j))_\mu(k_2 \times e(k_2, j'))_\nu e_\alpha(k_1, j)k_{2\alpha}e_\beta(k_2, j')k_{1\beta} \\ = (k_1 \times e(k_1, j))_\mu(k_2 \times e(k_2, j'))_\mu e_\alpha(k_1, j)k_{2\alpha}e_\beta(k_2, j')k_{1\beta} \\ = (-\epsilon^{\mu\alpha\gamma}k_{1\gamma})(-\epsilon^{\mu\beta\delta}k_{2\delta})k_{2\alpha}k_{1\beta} = -|k_1 \times k_2|^2 = -|k_1|^2|k_2|^2(1 - (\hat{k}_1\cdot\hat{k}_2)^2),$$

$$(7) \quad \Re\langle\sigma_1\sigma_2\rangle(e_1 \cdot e_2) = \Re\langle\sigma_\mu\sigma_\nu\rangle(k_1 \times e(k_1, j))_\mu(k_2 \times e(k_2, j'))_\nu e_\alpha(k_1, j)e_\alpha(k_2, j') \\ = (-\epsilon^{\mu\alpha\beta}k_{1\beta})(-\epsilon^{\mu\alpha\gamma}k_{2\gamma}) = 2(k_1 \cdot k_2),$$

$$(8) \quad \langle\sigma_1\sigma_2\sigma_2\sigma_1\rangle = \langle\sigma_1\sigma_\mu\sigma_\nu\sigma_1\rangle(k_2 \times e(k_2, j'))_\mu(k_2 \times e(k_2, j'))_\nu \\ = \langle\sigma_1\sigma_1\rangle(k_2 \times e(k_2, j'))_\mu(k_2 \times e(k_2, j'))_\mu \\ = |(k_2 \times e(k_2, j'))|^2|(k_1 \times e(k_1, j))|^2 = 2|k_1|^2 2|k_2|^2 = 4|k_1|^2|k_2|^2,$$

$$(9) \quad \Re\langle\sigma_1\sigma_2\sigma_1\sigma_2\rangle = -\langle\sigma_1\sigma_2\sigma_2\sigma_1\rangle + 2(k_1 \times e(k_1, j))_\mu(k_2 \times e(k_2, j'))_\mu \Re\langle\sigma_1\sigma_2\rangle \\ = -4|k_1|^2|k_2|^2 + 2(k_1 \times e(k_1, j))_\mu(k_2 \times e(k_2, j'))_\mu(k_1 \times e(k_1, j))_\nu(k_2 \times e(k_2, j'))_\nu \\ = -4|k_1|^2|k_2|^2 + 2(\delta_{\mu\nu} - \frac{k_{1\mu}k_{1\nu}}{|k_1|^2})(\delta_{\mu\nu} - \frac{k_{2\mu}k_{2\nu}}{|k_2|^2}) \\ = -4|k_1|^2|k_2|^2 + 2|k_1|^2|k_2|^2(1 + (\hat{k}_1\cdot\hat{k}_2)^2) = -2|k_1|^2|k_2|^2(1 - (\hat{k}_1\cdot\hat{k}_2)^2).$$

□

Using the diagrams presented in Fig.10-14 and (9)-(17), we can easily expressed 38 terms as integrals on

$$D = \{(k_1, k_2) \in \mathbf{R}^3 \times \mathbf{R}^3 | \kappa/m \leq k_1 \leq \Lambda/m, \kappa/m \leq k_2 \leq \Lambda/m\}.$$

Note that imaginary part of $\langle \sigma_a \sigma_b \rangle$ does not contribute integrals. We show the results:

1.

$$\begin{aligned}
(\Phi_1^\mu, H_1 \Phi_1^\mu)(\varphi_{(1)}, \varphi_{(1)}) &= \frac{1}{4} (A_\mu^+ \varphi_{(0)}, \frac{1}{H_0} A_\mu^+ \varphi_{(0)}) (\frac{1}{H_0} \sigma B^+ \varphi_{(0)}, \frac{1}{H_0} \sigma B^+ \varphi_{(0)}) \\
&= \frac{1}{4} \int_{D^4} \frac{d^3 k_1 d^3 k_2}{(2\pi)^6 \omega_1 \omega_2} \frac{1}{E_1} \frac{1}{E_2} \frac{1}{E_2} e_1 \cdot e_1 \langle \sigma_2 \sigma_2 \rangle \\
&= \frac{1}{4} \int_{D^4} \frac{d^3 k_1 d^3 k_2}{(2\pi)^6 \omega_1 \omega_2} \frac{4|k_2|^2}{E_1 E_2^2}
\end{aligned}$$

2.

$$\begin{aligned}
(\Phi_2^\mu, H_1 \Phi_2^\mu)(\varphi_{(1)}, \varphi_{(1)}) &= \frac{1}{4} (P_{f\mu} \frac{1}{H_0} \sigma B^+ \varphi_{(0)}, \frac{1}{H_0} P_{f\mu} \frac{1}{H_0} \sigma B^+ \varphi_{(0)}) (\frac{1}{H_0} \sigma B^+ \varphi_{(0)}, \frac{1}{H_0} \sigma B^+ \varphi_{(0)}) \\
&= \frac{1}{4} \int_{D^4} \frac{d^3 k_1 d^3 k_2}{(2\pi)^6 \omega_1 \omega_2} \frac{1}{E_1} \frac{1}{E_1} \frac{1}{E_1} \frac{1}{E_2} \frac{1}{E_2} |k_1|^2 \langle \sigma_1 \sigma_1 \rangle \langle \sigma_2 \sigma_2 \rangle \\
&= \frac{1}{4} \int_{D^4} \frac{d^3 k_1 d^3 k_2}{(2\pi)^6 \omega_1 \omega_2} \frac{4|k_1|^4 |k_2|^2}{E_1^3 E_2^2}
\end{aligned}$$

3.

$$\begin{aligned}
(\Phi_3^\mu, H_1 \Phi_3^\mu) &= \frac{1}{4} (A_\mu^+ \frac{1}{H_0} \sigma B^+ \varphi_{(0)}, \frac{1}{H_0} A_\mu^+ \frac{1}{H_0} \sigma B^+ \varphi_{(0)}) \\
&= \frac{1}{4} \int_{D^4} \frac{d^3 k_1 d^3 k_2}{(2\pi)^6 \omega_1 \omega_2} \frac{1}{E_2} \frac{1}{E_{12}} (\langle \sigma_2 \sigma_2 \rangle (e_1 \cdot e_1) \frac{1}{E_2} + \langle \sigma_2 \sigma_1 \rangle (e_1 \cdot e_2) \frac{1}{E_1}) \\
&= \frac{1}{4} \int_{D^4} \frac{d^3 k_1 d^3 k_2}{(2\pi)^6 \omega_1 \omega_2} \frac{1}{E_2} \frac{1}{E_{12}} (\frac{4|k_2|^2}{E_2} + \frac{2|k_1||k_2|(\hat{k}_1 \cdot \hat{k}_2)}{E_1})
\end{aligned}$$

4.

$$\begin{aligned}
(\Phi_5^\mu, H_1 \Phi_3^\mu) &= -\frac{1}{4} (P_{f\mu} \frac{1}{H_0} (P_f \cdot A^+) \frac{1}{H_0} \sigma B^+ \varphi_{(0)}, \frac{1}{H_0} A_\mu^+ \frac{1}{H_0} \sigma B^+ \varphi_{(0)}) \\
&= -\frac{1}{4} \int_{D^4} \frac{d^3 k_1 d^3 k_2}{(2\pi)^6 \omega_1 \omega_2} \frac{1}{E_{12}^2} \frac{1}{E_2} ((k_2 \cdot e_1)(k_2 \cdot e_1) \langle \sigma_2 \sigma_2 \rangle \frac{1}{E_2} + (k_2 \cdot e_1)(k_1 \cdot e_2) \langle \sigma_2 \sigma_1 \rangle \frac{1}{E_1}) \\
&= -\frac{1}{4} \int_{D^4} \frac{d^3 k_1 d^3 k_2}{(2\pi)^6 \omega_1 \omega_2} \frac{1}{E_{12}^2} \frac{1}{E_2} (\frac{2|k_2|^4 (1 - (\hat{k}_1 \cdot \hat{k}_2)^2)}{E_2} + \frac{-|k_1|^2 |k_2|^2 (1 - (\hat{k}_1 \cdot \hat{k}_2)^2)}{E_1})
\end{aligned}$$

5.

$$(\Phi_3^\mu, H_1 \Phi_5^\mu) = \overline{(\Phi_5^\mu, H_1 \Phi_3^\mu)}$$

6.

$$\begin{aligned}
(\Phi_4^\mu, H_1 \Phi_4^\mu) &= [6, (3.32)] = \frac{1}{4} (P_{f\mu} \frac{1}{H_0} (A^+ A^+) \varphi_{(0)}, \frac{1}{H_0} P_{f\mu} \frac{1}{H_0} (A^+ A^+) \varphi_{(0)}) \\
&= \frac{1}{4} \int_{D^4} \frac{d^3 k_1 d^3 k_2}{(2\pi)^6 \omega_1 \omega_2 E_{12}^3} |k_1 + k_2|^2 (e_1 \cdot e_2) (e_1 \cdot e_2 + e_2 \cdot e_1) \\
&= \frac{1}{4} \int_{D^4} \frac{d^3 k_1 d^3 k_2}{(2\pi)^6 \omega_1 \omega_2 E_{12}^3} |k_1 + k_2|^2 2(1 + (\hat{k}_1 \cdot \hat{k}_2)^2)
\end{aligned}$$

7.

$$\begin{aligned}
(\Phi_6^\mu, H_1 \Phi_4^\mu) &= -\frac{1}{8} (P_{f\mu} \frac{1}{H_0} \sigma B^+ \frac{1}{H_0} \sigma B^+ \varphi_{(0)}, \frac{1}{H_0} P_{f\mu} \frac{1}{H_0} (A^+ A^+) \varphi_{(0)}) \\
&= -\frac{1}{8} \int_{D^4} \frac{d^3 k_1 d^3 k_2}{(2\pi)^6 \omega_1 \omega_2 E_{12}^3} |k_1 + k_2|^2 \left(\frac{\langle \sigma_1 \sigma_2 \rangle e_1 \cdot e_2}{E_2} + \frac{\langle \sigma_2 \sigma_1 \rangle e_2 \cdot e_1}{E_1} \right) \\
&= -\frac{1}{8} \int_{D^4} \frac{d^3 k_1 d^3 k_2}{(2\pi)^6 \omega_1 \omega_2 E_{12}^3} |k_1 + k_2|^2 2|k_1| |k_2| (\hat{k}_1 \cdot \hat{k}_2) \left(\frac{1}{E_2} + \frac{1}{E_1} \right)
\end{aligned}$$

8.

$$(\Phi_4^\mu, H_1 \Phi_6^\mu) = \overline{(\Phi_6^\mu, H_1 \Phi_4^\mu)}$$

9.

$$\begin{aligned}
(\Phi_5^\mu, H_1 \Phi_5^\mu) &= \frac{1}{4} (P_{f\mu} \frac{1}{H_0} (P_f \cdot A^+) \frac{1}{H_0} \sigma B^+ \varphi_{(0)}, \frac{1}{H_0} P_{f\mu} \frac{1}{H_0} (P_f \cdot A^+) \frac{1}{H_0} \sigma B^+ \varphi_{(0)}) \\
&= \frac{1}{4} \int_{D^4} \frac{d^3 k_1 d^3 k_2}{(2\pi)^6 \omega_1 \omega_2 E_{12}^3} \frac{1}{E_2} |k_1 + k_2|^2 (k_2 \cdot e_1) ((k_2 \cdot e_1) \langle \sigma_2 \sigma_2 \rangle \frac{1}{E_2} + (k_1 \cdot e_2) \langle \sigma_2 \sigma_1 \rangle \frac{1}{E_1}) \\
&= \frac{1}{4} \int_{D^4} \frac{d^3 k_1 d^3 k_2}{(2\pi)^6 \omega_1 \omega_2 E_{12}^3} \frac{1}{E_2} |k_1 + k_2|^2 \left(\frac{2|k_2|^4 (1 - (\hat{k}_1 \cdot \hat{k}_2)^2)}{E_2} + \frac{-|k_1|^2 |k_2|^2 (1 - (\hat{k}_1 \cdot \hat{k}_2)^2)}{E_1} \right)
\end{aligned}$$

10.

$$\begin{aligned}
(\Phi_6^\mu, H_1 \Phi_6^\mu) &= \mathcal{E}_2 = \frac{1}{16} (P_{f\mu} \frac{1}{H_0} \sigma B^+ \frac{1}{H_0} \sigma B^+ \varphi_{(0)}, \frac{1}{H_0} P_{f\mu} \frac{1}{H_0} \sigma B^+ \frac{1}{H_0} \sigma B^+ \varphi_{(0)}) \\
&= \frac{1}{16} \int_{D^4} \frac{d^3 k_1 d^3 k_2}{(2\pi)^6 \omega_1 \omega_2 E_{12}^3} \frac{1}{E_2} |k_1 + k_2|^2 (\langle \sigma_2 \sigma_1 \sigma_1 \sigma_2 \rangle \frac{1}{E_2} + \langle \sigma_2 \sigma_1 \sigma_2 \sigma_1 \rangle \frac{1}{E_1}) \\
&= \frac{1}{16} \int_{D^4} \frac{d^3 k_1 d^3 k_2}{(2\pi)^6 \omega_1 \omega_2 E_{12}^3} \frac{1}{E_2} |k_1 + k_2|^2 \left(\frac{4|k_1|^2 |k_2|^2}{E_2} + \frac{-2|k_1|^2 |k_2|^2 (1 - (\hat{k}_1 \cdot \hat{k}_2)^2)}{E_1} \right)
\end{aligned}$$

11.

$$\begin{aligned}
(\Phi_1^\mu, H_4 \Phi_1^\mu) &= [6, (3.34)] = -(A_\nu^- \frac{1}{H_0} A_\mu^+ \varphi_{(0)}, A_\nu^- \frac{1}{H_0} A_\mu^+ \varphi_{(0)}) \\
&= - \int_{D^4} \frac{d^3 k_1 d^3 k_2}{(2\pi)^6 \omega_1 \omega_2 E_1 E_2} (e_1 \cdot e_2) (e_1 \cdot e_2) \\
&= - \int_{D^4} \frac{d^3 k_1 d^3 k_2}{(2\pi)^6 \omega_1 \omega_2 E_1 E_2} (1 + (\hat{k}_1 \cdot \hat{k}_2)^2)
\end{aligned}$$

12.

$$\begin{aligned}
(\Phi_2^\mu, H_4 \Phi_2^\mu) &= -\frac{1}{8} (P_{f\mu} \frac{1}{H_0} \sigma B^+ \varphi_{(0)}, \frac{1}{H_0} (A^+ A^+ + 2A^+ A^- + A^- A^-) \frac{1}{H_0} P_{f\mu} \frac{1}{H_0} \sigma B^+ \varphi_{(0)}) \\
&= -\frac{1}{4} (A_\nu^- \frac{1}{H_0} P_{f\mu} \frac{1}{H_0} \sigma B^+ \varphi_{(0)}, A_\nu^- \frac{1}{H_0} P_{f\mu} \frac{1}{H_0} \sigma B^+ \varphi_{(0)}) \\
&= -\frac{1}{4} \int_{D^4} \frac{d^3 k_1 d^3 k_2}{(2\pi)^6 \omega_1 \omega_2} \frac{1}{E_1} \frac{1}{E_1} \frac{1}{E_2} \frac{1}{E_2} \langle \sigma_2 \sigma_1 \rangle (k_1 \cdot k_2) (e_1 \cdot e_2) \\
&= -\frac{1}{4} \int_{D^4} \frac{d^3 k_1 d^3 k_2}{(2\pi)^6 \omega_1 \omega_2} \frac{2|k_1|^2 |k_2|^2 (\hat{k}_1 \cdot \hat{k}_2)^2}{E_1^2 E_2^2}
\end{aligned}$$

13.

$$\begin{aligned}
(\Phi_1^\mu, H_5 \Phi_1^\mu) &= [6, (3.36)] = (A_\mu^+ \varphi_{(0)}, \frac{1}{H_0} (P_f \cdot A^+) \frac{1}{H_0} (P_f \cdot A^+) \frac{1}{H_0} A_\mu^+ \varphi_{(0)}) \\
&= \int_{D^4} \frac{d^3 k_1 d^3 k_2}{(2\pi)^6 \omega_1 \omega_2} \frac{1}{E_{12}} \frac{1}{E_2} (k_2 \cdot e_1) ((k_2 \cdot e_1) (e_2 \cdot e_2) \frac{1}{E_2} + (k_1 \cdot e_2) (e_1 \cdot e_2) \frac{1}{E_1}) \\
&= \int_{D^4} \frac{d^3 k_1 d^3 k_2}{(2\pi)^6 \omega_1 \omega_2} \frac{1}{E_{12}} \frac{1}{E_2} \left(\frac{2|k_2|^2 (1 - (\hat{k}_1 \cdot \hat{k}_2)^2)}{E_2} + \frac{-(k_1 \cdot k_2) (1 - (\hat{k}_1 \cdot \hat{k}_2)^2)}{E_1} \right)
\end{aligned}$$

14.

$$\begin{aligned}
(\Phi_2^\mu, H_5 \Phi_2^\mu) &= \frac{1}{4} \left(\frac{1}{H_0} (P_f \cdot A^+) \frac{1}{H_0} P_{f\mu} \frac{1}{H_0} \sigma B^+ \varphi_{(0)}, (P_f \cdot A^+) \frac{1}{H_0} P_{f\mu} \frac{1}{H_0} \sigma B^+ \varphi_{(0)} \right) \\
&= \frac{1}{4} \int_{D^4} \frac{d^3 k_1 d^3 k_2}{(2\pi)^6 \omega_1 \omega_2} \frac{1}{E_{12}} \frac{1}{E_2^2} (k_2 \cdot e_1) ((k_2 \cdot e_1) |k_2|^2 \langle \sigma_2 \sigma_2 \rangle \frac{1}{E_2^2} + (k_1 \cdot e_2) (k_1 \cdot k_2) \langle \sigma_2 \sigma_1 \rangle \frac{1}{E_1^2}) \\
&= \frac{1}{4} \int_{D^4} \frac{d^3 k_1 d^3 k_2}{(2\pi)^6 \omega_1 \omega_2} \frac{1}{E_{12}} \frac{1}{E_2^2} \left(\frac{2|k_2|^6 (1 - (\hat{k}_1 \cdot \hat{k}_2)^2)}{E_2^2} + \frac{(k_1 \cdot k_2) (-|k_1|^2 |k_2|^2 (1 - (\hat{k}_1 \cdot \hat{k}_2)^2))}{E_1^2} \right)
\end{aligned}$$

15.

$$\begin{aligned}
(\Phi_2^\mu, H_6 \Phi_1^\mu) &= -\frac{1}{4} \left(\frac{1}{H_0} \sigma B \frac{1}{H_0} P_{f\mu} \frac{1}{H_0} \sigma B^+ \varphi_{(0)}, (P_f \cdot A^+) \frac{1}{H_0} A_\mu^+ \varphi_{(0)} \right) \\
&= -\frac{1}{4} \int_{D^4} \frac{d^3 k_1 d^3 k_2}{(2\pi)^6 \omega_1 \omega_2} \frac{1}{E_{12}} \frac{1}{E_2} (k_2 \cdot e_1) ((k_2 \cdot e_2) \langle \sigma_1 \sigma_2 \rangle \frac{1}{E_2} \frac{1}{E_2} + (k_1 \cdot e_2) \langle \sigma_2 \sigma_1 \rangle \frac{1}{E_1} \frac{1}{E_1}) \\
&= -\frac{1}{4} \int_{D^4} \frac{d^3 k_1 d^3 k_2}{(2\pi)^6 \omega_1 \omega_2} \frac{1}{E_{12}} \frac{1}{E_2} \frac{-|k_1|^2 |k_2|^2 (1 - (\hat{k}_1 \cdot \hat{k}_2)^2)}{E_1^2}
\end{aligned}$$

16.

$$\begin{aligned}
(\Phi_1^\mu, H_6 \Phi_2^\mu) &= -\frac{1}{4} \left(\sigma B^+ \frac{1}{H_0} A_\mu^+ \varphi_{(0)}, \frac{1}{H_0} (P_f \cdot A^+) \frac{1}{H_0} P_{f\mu} \frac{1}{H_0} \sigma B^+ \varphi_{(0)} \right) \\
&= -\frac{1}{4} \int_{D^4} \frac{d^3 k_1 d^3 k_2}{(2\pi)^6 \omega_1 \omega_2} \frac{1}{E_{12}} \frac{1}{E_2} \frac{1}{E_2} ((k_2 \cdot e_1) (k_2 \cdot e_2) \langle \sigma_2 \sigma_1 \rangle \frac{1}{E_2} + (k_2 \cdot e_1) (k_2 \cdot e_1) \langle \sigma_2 \sigma_2 \rangle \frac{1}{E_1}) \\
&= -\frac{1}{4} \int_{D^4} \frac{d^3 k_1 d^3 k_2}{(2\pi)^6 \omega_1 \omega_2} \frac{1}{E_{12}} \frac{1}{E_2^2} \frac{2|k_2|^4 (1 - (\hat{k}_1 \cdot \hat{k}_2)^2)}{E_1}
\end{aligned}$$

17.

$$\begin{aligned}
(\Phi_2^\mu, H_7 \Phi_1^\mu) &= -\frac{1}{4} \left(\frac{1}{H_0} (P_f \cdot A^+) \frac{1}{H_0} P_{f\mu} \frac{1}{H_0} \sigma B^+ \varphi_{(0)}, \sigma B^+ \frac{1}{H_0} A_\mu^+ \varphi_{(0)} \right) \\
&= -\frac{1}{4} \int_{D^4} \frac{d^3 k_1 d^3 k_2}{(2\pi)^6 \omega_1 \omega_2} \frac{1}{E_{12}} \frac{1}{E_2} ((k_2 \cdot e_1)(k_2 \cdot e_2) \langle \sigma_1 \sigma_2 \rangle) \frac{1}{E_2} \frac{1}{E_2} + (k_1 \cdot e_2)(k_1 \cdot e_1) \langle \sigma_1 \sigma_1 \rangle \frac{1}{E_1} \frac{1}{E_1} \\
&= -\frac{1}{4} \int_{D^4} \frac{d^3 k_1 d^3 k_2}{(2\pi)^6 \omega_1 \omega_2} \frac{1}{E_{12}} \frac{1}{E_2} \frac{2|k_1|^4 (1 - (\hat{k}_1 \cdot \hat{k}_2)^2)}{E_1^2}
\end{aligned}$$

18.

$$\begin{aligned}
(\Phi_1^\mu, H_7 \Phi_2^\mu) &= -\frac{1}{4} \left(\sigma B^+ \frac{1}{H_0} (P_f \cdot A^+) \frac{1}{H_0} A_\mu^+ \varphi_{(0)}, \frac{1}{H_0} P_{f\mu} \frac{1}{H_0} \sigma B^+ \varphi_{(0)} \right) \\
&= -\frac{1}{4} \int_{D^4} \frac{d^3 k_1 d^3 k_2}{(2\pi)^6 \omega_1 \omega_2} \frac{1}{E_{12}} \frac{1}{E_2} \frac{1}{E_2} \langle \sigma_2 \sigma_1 \rangle ((k_2 \cdot e_1)(k_2 \cdot e_2) \frac{1}{E_2} + (k_1 \cdot e_2)(k_2 \cdot e_1) \frac{1}{E_1}) \\
&= -\frac{1}{4} \int_{D^4} \frac{d^3 k_1 d^3 k_2}{(2\pi)^6 \omega_1 \omega_2} \frac{1}{E_{12}} \frac{1}{E_2^2} \frac{-|k_1|^2 |k_2|^2 (1 - (\hat{k}_1 \cdot \hat{k}_2)^2)}{E_1}
\end{aligned}$$

19.

$$\begin{aligned}
(\Phi_1^\mu, H_8 \Phi_1^\mu) &= \mathcal{E}_0 = \frac{1}{4} \left(\sigma B^+ \frac{1}{H_0} A_\mu^+ \varphi_{(0)}, \frac{1}{H_0} \sigma B^+ \frac{1}{H_0} A_\mu^+ \varphi_{(0)} \right) \\
&\quad - \frac{1}{4} \left(\sigma B^+ \varphi_{(0)}, \frac{1}{H_0} \sigma B^+ \varphi_{(0)} \right) \left(A_\mu^+ \varphi_{(0)}, \frac{1}{H_0} \frac{1}{H_0} A_\mu^+ \varphi_{(0)} \right) \\
&= \frac{1}{4} \int_{D^4} \frac{d^3 k_1 d^3 k_2}{(2\pi)^6 \omega_1 \omega_2} \frac{1}{E_{12}} \frac{1}{E_2} ((e_2 \cdot e_2) \langle \sigma_1 \sigma_1 \rangle) \frac{1}{E_2} + (e_2 \cdot e_1) \langle \sigma_1 \sigma_2 \rangle \frac{1}{E_1} \\
&\quad - \frac{1}{4} \int_{D^4} \frac{d^3 k_1 d^3 k_2}{(2\pi)^6 \omega_1 \omega_2} \frac{1}{E_1} \frac{1}{E_2} \frac{1}{E_2} \langle \sigma_1 \sigma_1 \rangle (e_2 \cdot e_2) \\
&= \frac{1}{4} \int_{D^4} \frac{d^3 k_1 d^3 k_2}{(2\pi)^6 \omega_1 \omega_2} \frac{1}{E_{12}} \left(\frac{4|k_1|^2}{E_2^2} + \frac{2|k_1||k_2|(\hat{k}_1 \cdot \hat{k}_2)}{E_1 E_2} \right) - \frac{1}{4} \int_{D^4} \frac{d^3 k_1 d^3 k_2}{(2\pi)^6 \omega_1 \omega_2} \frac{1}{E_1} \frac{1}{E_2^2} 4|k_1|^2
\end{aligned}$$

20.

$$\begin{aligned}
(\Phi_2^\mu, H_8 \Phi_2^\mu) &= \mathcal{E}_3 = \frac{1}{16} \left(\sigma B^+ \frac{1}{H_0} P_{f\mu} \frac{1}{H_0} \sigma B^+ \varphi_{(0)}, \frac{1}{H_0} \sigma B^+ \frac{1}{H_0} P_{f\mu} \frac{1}{H_0} \sigma B^+ \varphi_{(0)} \right) \\
&\quad - \frac{1}{16} \left(\sigma B^+ \varphi_{(0)}, \frac{1}{H_0} \sigma B^+ \varphi_{(0)} \right) \left(\sigma B^+ \varphi_{(0)}, \frac{1}{H_0} \frac{1}{H_0} P_{f\mu} \frac{1}{H_0} P_{f\mu} \frac{1}{H_0} \sigma B^+ \varphi_{(0)} \right) \\
&= \frac{1}{16} \int_{D^4} \frac{d^3 k_1 d^3 k_2}{(2\pi)^6 \omega_1 \omega_2} \frac{1}{E_{12}} \frac{1}{E_2^2} (\langle \sigma_2 \sigma_1 \sigma_1 \sigma_2 \rangle |k_2|^2 \frac{1}{E_2} \frac{1}{E_2} + (k_1 \cdot k_2) \langle \sigma_2 \sigma_1 \sigma_2 \sigma_1 \rangle \frac{1}{E_1} \frac{1}{E_1}) \\
&\quad - \frac{1}{16} \int_{D^4} \frac{d^3 k_1 d^3 k_2}{(2\pi)^6 \omega_1 \omega_2} \frac{1}{E_1} \frac{1}{E_2} \frac{1}{E_2} \frac{1}{E_2} |k_2|^2 \langle \sigma_1 \sigma_1 \rangle \langle \sigma_2 \sigma_2 \rangle \\
&= \frac{1}{16} \int_{D^4} \frac{d^3 k_1 d^3 k_2}{(2\pi)^6 \omega_1 \omega_2} \frac{1}{E_{12}} \frac{1}{E_2^2} \left(\frac{4|k_1|^2 |k_2|^4}{E_2^2} + \frac{(k_1 \cdot k_2) (-2|k_1|^2 |k_2|^2 (1 - (\hat{k}_1 \cdot \hat{k}_2)^2))}{E_1^2} \right) \\
&\quad - \frac{1}{16} \int_{D^4} \frac{d^3 k_1 d^3 k_2}{(2\pi)^6 \omega_1 \omega_2} \frac{1}{E_1} \frac{1}{E_2^4} 4|k_1|^2 |k_2|^4
\end{aligned}$$

21.

$$\begin{aligned}
(\Phi_4^\mu, H_2 \Phi_1^\mu) &= [6, (3.33)] = \frac{1}{2} (P_{f\mu} \frac{1}{H_0} A^+ A^+ \varphi_{(0)}, \frac{1}{H_0} (P_f \cdot A^+) \frac{1}{H_0} A_\mu^+ \varphi_{(0)}) \\
&= \frac{1}{2} \int_{D^4} \frac{d^3 k_1 d^3 k_2}{(2\pi)^6 \omega_1 \omega_2} \frac{1}{E_{12}^2} \frac{1}{E_2} (k_2 \cdot e_1) (k_1 \cdot e_2) ((e_1 \cdot e_2) + (e_2 \cdot e_1)) \\
&= \frac{1}{2} \int_{D^4} \frac{d^3 k_1 d^3 k_2}{(2\pi)^6 \omega_1 \omega_2} \frac{1}{E_{12}^2} \frac{1}{E_2} (-2) (k_1 \cdot k_2) (1 - (\hat{k}_1 \cdot \hat{k}_2)^2)
\end{aligned}$$

22.

$$\begin{aligned}
(\Phi_6^\mu, H_2 \Phi_1^\mu) &= -\frac{1}{4} (P_{f\mu} \frac{1}{H_0} \sigma B^+ \frac{1}{H_0} \sigma B^+ \varphi_{(0)}, \frac{1}{H_0} (P_f \cdot A^+) \frac{1}{H_0} A_\mu^+ \varphi_{(0)}) \\
&= -\frac{1}{4} \int_{D^4} \frac{d^3 k_1 d^3 k_2}{(2\pi)^6 \omega_1 \omega_2} \frac{1}{E_{12}^2} \frac{1}{E_2} ((k_2 \cdot e_1) (k_1 \cdot e_2) \langle \sigma_1 \sigma_2 \rangle \frac{1}{E_2} + (k_1 \cdot e_2) (k_2 \cdot e_1) \langle \sigma_2 \sigma_1 \rangle \frac{1}{E_1}) \\
&= -\frac{1}{4} \int_{D^4} \frac{d^3 k_1 d^3 k_2}{(2\pi)^6 \omega_1 \omega_2} \frac{1}{E_{12}^2} \frac{1}{E_2} (-|k_1|^2 |k_2|^2 (1 - (\hat{k}_1 \cdot \hat{k}_2)^2)) (\frac{1}{E_1} + \frac{1}{E_2})
\end{aligned}$$

23.

$$\begin{aligned}
(\Phi_3^\mu, H_2 \Phi_2^\mu) &= -\frac{1}{4} (A_\mu^+ \frac{1}{H_0} \sigma B^+ \varphi_{(0)}, \frac{1}{H_0} (P_f \cdot A^+) \frac{1}{H_0} P_{f\mu} \frac{1}{H_0} \sigma B^+ \varphi_{(0)}) \\
&= -\frac{1}{4} \int_{D^4} \frac{d^3 k_1 d^3 k_2}{(2\pi)^6 \omega_1 \omega_2} \frac{1}{E_{12}^2} \frac{1}{E_2} ((k_2 \cdot e_1) (k_2 \cdot e_1) \langle \sigma_2 \sigma_2 \rangle \frac{1}{E_2} + (k_2 \cdot e_1) (k_2 \cdot e_2) \langle \sigma_2 \sigma_1 \rangle \frac{1}{E_1}) \\
&= -\frac{1}{4} \int_{D^4} \frac{d^3 k_1 d^3 k_2}{(2\pi)^6 \omega_1 \omega_2} \frac{1}{E_{12}^2} \frac{1}{E_2^3} 2|k_2|^4 (1 - (\hat{k}_1 \cdot \hat{k}_2)^2)
\end{aligned}$$

24.

$$\begin{aligned}
(\Phi_5^\mu, H_2 \Phi_2^\mu) &= \frac{1}{4} (P_{f\mu} \frac{1}{H_0} (P_f \cdot A^+) \frac{1}{H_0} \sigma B^+ \varphi_{(0)}, \frac{1}{H_0} (P_f \cdot A^+) \frac{1}{H_0} P_{f\mu} \frac{1}{H_0} \sigma B^+ \varphi_{(0)}) \\
&= \frac{1}{4} \int_{D^4} \frac{d^3 k_1 d^3 k_2}{(2\pi)^6 \omega_1 \omega_2} \frac{1}{E_{12}^2} \frac{1}{E_2} \frac{1}{E_2} (k_2 \cdot e_1) (k_1 + k_2) \cdot k_2 ((k_2 \cdot e_1) \langle \sigma_2 \sigma_2 \rangle \frac{1}{E_2} + (k_1 \cdot e_2) \langle \sigma_2 \sigma_1 \rangle \frac{1}{E_1}) \\
&= \frac{1}{4} \int_{D^4} \frac{d^3 k_1 d^3 k_2}{(2\pi)^6 \omega_1 \omega_2} \frac{1}{E_{12}^2} \frac{1}{E_2^2} k_2 \cdot (k_1 + k_2) (\frac{2|k_2|^4 (1 - (\hat{k}_1 \cdot \hat{k}_2)^2)}{E_2} + \frac{-|k_1|^2 |k_2|^2 (1 - (\hat{k}_1 \cdot \hat{k}_2)^2)}{E_1})
\end{aligned}$$

25.

$$\begin{aligned}
(\Phi_3^\mu, H_3 \Phi_1^\mu) &= \frac{1}{4} (A_\mu^+ \frac{1}{H_0} \sigma B^+ \varphi_{(0)}, \frac{1}{H_0} \sigma B^+ \frac{1}{H_0} A_\mu^+ \varphi_{(0)}) \\
&= \frac{1}{4} \int_{D^4} \frac{d^3 k_1 d^3 k_2}{(2\pi)^6 \omega_1 \omega_2} \frac{1}{E_{12}^2} \frac{1}{E_2} (\langle \sigma_2 \sigma_1 \rangle (e_1 \cdot e_2) \frac{1}{E_2} + \langle \sigma_1 \sigma_1 \rangle (e_2 \cdot e_2) \frac{1}{E_1}) \\
&= \frac{1}{4} \int_{D^4} \frac{d^3 k_1 d^3 k_2}{(2\pi)^6 \omega_1 \omega_2} \frac{1}{E_{12}^2} \frac{1}{E_2} (\frac{2|k_1| |k_2| (\hat{k}_1 \cdot \hat{k}_2)}{E_2} + \frac{4|k_1|^2}{E_1})
\end{aligned}$$

26.

$$\begin{aligned}
(\Phi_5^\mu, H_3 \Phi_1^\mu) &= -\frac{1}{4} (P_{f\mu} \frac{1}{H_0} (P_f \cdot A^+) \frac{1}{H_0} \sigma B^+ \varphi_{(0)}, \frac{1}{H_0} \sigma B^+ \frac{1}{H_0} A_\mu^+ \varphi_{(0)}) \\
&= -\frac{1}{4} \int_{D^4} \frac{d^3 k_1 d^3 k_2}{(2\pi)^6 \omega_1 \omega_2} \frac{1}{E_{12}^2} \frac{1}{E_2} (k_1 \cdot e_2) (\langle \sigma_1 \sigma_2 \rangle (k_2 \cdot e_1) \frac{1}{E_2} + \langle \sigma_1 \sigma_1 \rangle (k_1 \cdot e_2) \frac{1}{E_1}) \\
&= -\frac{1}{4} \int_{D^4} \frac{d^3 k_1 d^3 k_2}{(2\pi)^6 \omega_1 \omega_2} \frac{1}{E_{12}^2} \frac{1}{E_2} \left(\frac{-|k_1|^2 |k_2|^2 (1 - (\hat{k}_1 \cdot \hat{k}_2)^2)}{E_2} + \frac{2|k_1|^4 (1 - (\hat{k}_1 \cdot \hat{k}_2)^2)}{E_1} \right)
\end{aligned}$$

27.

$$\begin{aligned}
(\Phi_4^\mu, H_3 \Phi_2^\mu) &= -\frac{1}{8} (P_{f\mu} \frac{1}{H_0} A^+ A^+ \varphi_{(0)}, \frac{1}{H_0} \sigma B \frac{1}{H_0} P_{f\mu} \frac{1}{H_0} \sigma B^+ \varphi_{(0)}) \\
&= -\frac{1}{8} \int_{D^4} \frac{d^3 k_1 d^3 k_2}{(2\pi)^6 \omega_1 \omega_2} \frac{1}{E_{12}^2} \langle \sigma_2 \sigma_1 \rangle (k_1 + k_2) \cdot k_2 \frac{1}{E_2} \frac{1}{E_2} (e_1 \cdot e_2 + e_2 \cdot e_1) \\
&= -\frac{1}{8} \int_{D^4} \frac{d^3 k_1 d^3 k_2}{(2\pi)^6 \omega_1 \omega_2} \frac{1}{E_{12}^2} \frac{1}{E_2^2} 4k_2 \cdot (k_1 + k_2) |k_1| |k_2| (\hat{k}_1 \cdot \hat{k}_2)
\end{aligned}$$

28.

$$\begin{aligned}
(\Phi_6^\mu, H_3 \Phi_2^\mu) &= \frac{1}{16} (P_{f\mu} \frac{1}{H_0} \sigma B^+ \frac{1}{H_0} \sigma B^+ \varphi_{(0)}, \frac{1}{H_0} \sigma B \frac{1}{H_0} P_{f\mu} \frac{1}{H_0} \sigma B^+ \varphi_{(0)}) \\
&= \frac{1}{16} \int_{D^4} \frac{d^3 k_1 d^3 k_2}{(2\pi)^6 \omega_1 \omega_2} \frac{1}{E_{12}^2} \frac{1}{E_2} \frac{1}{E_2} (k_1 + k_2) \cdot k_2 (\langle \sigma_2 \sigma_1 \sigma_1 \sigma_2 \rangle \frac{1}{E_2} + \langle \sigma_2 \sigma_1 \sigma_2 \sigma_1 \rangle \frac{1}{E_1}) \\
&= \frac{1}{16} \int_{D^4} \frac{d^3 k_1 d^3 k_2}{(2\pi)^6 \omega_1 \omega_2} \frac{1}{E_{12}^2} \frac{1}{E_2^2} (k_1 + k_2) \cdot k_2 \left(\frac{4|k_1|^2 |k_2|^2}{E_2} + \frac{-2|k_1|^2 |k_2|^2 (1 - (\hat{k}_1 \cdot \hat{k}_2)^2)}{E_1} \right)
\end{aligned}$$

29.

$$\begin{aligned}
(\Phi_7^\mu, H_1 \Phi_1^\mu) &= [6, (3.31)] = -\frac{1}{2} \left(\frac{1}{H_0} A^+ A^+ \varphi_{(0)}, A_\mu^+ \frac{1}{H_0} A_\mu^+ \varphi_{(0)} \right) \\
&= -\frac{1}{2} \int_{D^4} \frac{d^3 k_1 d^3 k_2}{(2\pi)^6 \omega_1 \omega_2} (e_1 \cdot e_2) ((e_1 \cdot e_2) + (e_2 \cdot e_1)) \\
&= -\frac{1}{2} \int_{D^4} \frac{d^3 k_1 d^3 k_2}{(2\pi)^6 \omega_1 \omega_2} \frac{1}{E_{12}} \frac{1}{E_2} 2(1 + (\hat{k}_1 \cdot \hat{k}_2)^2)
\end{aligned}$$

30.

$$\begin{aligned}
(\Phi_9^\mu, H_1 \Phi_1^\mu) &= \frac{1}{4} \left(\frac{1}{H_0} \sigma B^+ \frac{1}{H_0} \sigma B^+ \varphi_{(0)}, A_\mu^+ \frac{1}{H_0} A_\mu^+ \varphi_{(0)} \right) \\
&= \frac{1}{4} \int_{D^4} \frac{d^3 k_1 d^3 k_2}{(2\pi)^6 \omega_1 \omega_2} \frac{1}{E_{12}} \frac{1}{E_2} (e_1 \cdot e_2) (\langle \sigma_1 \sigma_2 \rangle \frac{1}{E_2} + \langle \sigma_2 \sigma_1 \rangle \frac{1}{E_1}) \\
&= \frac{1}{4} \int_{D^4} \frac{d^3 k_1 d^3 k_2}{(2\pi)^6 \omega_1 \omega_2} \frac{1}{E_{12}} \frac{1}{E_2} 2|k_1| |k_2| (\hat{k}_1 \cdot \hat{k}_2) \left(\frac{1}{E_1} + \frac{1}{E_2} \right)
\end{aligned}$$

31.

$$\begin{aligned}
(\Phi_{11}^\mu, H_1 \Phi_1^\mu) &= [6, \text{RHS of (3.30)}] = -\frac{1}{2} \left(\frac{1}{H_0} A^+ A^+ \varphi_{(0)}, (P_f \cdot A^+) \frac{1}{H_0} P_{f\mu} \frac{1}{H_0} A_\mu^+ \varphi_{(0)} \right) \\
&= -\frac{1}{2} \int_{D^4} \frac{d^3 k_1 d^3 k_2}{(2\pi)^6 \omega_1 \omega_2} \frac{1}{E_{12}} \frac{1}{E_2} \frac{1}{E_2} (e_2 \cdot k_2) (e_1 \cdot k_2) (e_1 \cdot e_2 + e_2 \cdot e_1) = 0
\end{aligned}$$

32.

$$\begin{aligned}
(\Phi_{13}^\mu, H_1 \Phi_1^\mu) &= \frac{1}{4} (P_{f\mu} \frac{1}{H_0} (P_f \cdot A^+) \frac{1}{H_0} \sigma B^+ \frac{1}{H_0} \sigma B^+ \varphi_{(0)}, \frac{1}{H_0} A_\mu^+ \varphi_{(0)}) \\
&= \frac{1}{4} \int_{D^4} \frac{d^3 k_1 d^3 k_2}{(2\pi)^6 \omega_1 \omega_2} \frac{1}{E_{12}} \frac{1}{E_2} \frac{1}{E_2} (e_2 \cdot k_2) (k_2 \cdot e_1) (\langle \sigma_1 \sigma_2 \rangle \frac{1}{E_2} + \langle \sigma_2 \sigma_1 \rangle \frac{1}{E_1}) = 0
\end{aligned}$$

33.

$$\begin{aligned}
(\Phi_{15}^\mu, H_1 \Phi_1^\mu) &= \frac{1}{4} (P_{f\mu} \frac{1}{H_0} \sigma B^+ \frac{1}{H_0} (P_f \cdot A^+) \frac{1}{H_0} \sigma B^+ \varphi_{(0)}, \frac{1}{H_0} A_\mu^+ \varphi_{(0)}) \\
&= \int_{D^4} \frac{d^3 k_1 d^3 k_2}{(2\pi)^6 \omega_1 \omega_2} \frac{1}{E_{12}} \frac{1}{E_2} \frac{1}{E_2} (e_2 \cdot k_2) ((k_2 \cdot e_1) \langle \sigma_1 \sigma_2 \rangle \frac{1}{E_2} + (k_1 \cdot e_2) \langle \sigma_1 \sigma_1 \rangle \frac{1}{E_1}) = 0
\end{aligned}$$

34.

$$\begin{aligned}
(\Phi_{15}^\mu, H_1 \Phi_2^\mu) &= -\frac{1}{4} \left(\frac{1}{H_0} (P_f \cdot A^+) \frac{1}{H_0} \sigma B^+ \varphi_{(0)}, A_\mu^+ \frac{1}{H_0} P_{f\mu} \frac{1}{H_0} \sigma B^+ \varphi_{(0)} \right) \\
&= -\frac{1}{4} \int_{D^4} \frac{d^3 k_1 d^3 k_2}{(2\pi)^6 \omega_1 \omega_2} \frac{1}{E_{12}} \frac{1}{E_2} \frac{1}{E_2} (k_2 \cdot e_1) ((k_2 \cdot e_1) \langle \sigma_2 \sigma_2 \rangle \frac{1}{E_2} + (k_1 \cdot e_2) \langle \sigma_2 \sigma_1 \rangle \frac{1}{E_1}) \\
&= -\frac{1}{4} \int_{D^4} \frac{d^3 k_1 d^3 k_2}{(2\pi)^6 \omega_1 \omega_2} \frac{1}{E_{12}} \frac{1}{E_2^2} \left(\frac{2|k_2|^4 (1 - (\hat{k}_1 \cdot \hat{k}_2)^2)}{E_2} + \frac{-|k_1|^2 |k_2|^2 (1 - (\hat{k}_1 \cdot \hat{k}_2)^2)}{E_1} \right)
\end{aligned}$$

35.

$$\begin{aligned}
(\Phi_{10}^\mu, H_1 \Phi_2^\mu) &= -\frac{1}{8} (P_{f\mu} \frac{1}{H_0} 2A^+ A^- \frac{1}{H_0} \sigma B^+ \varphi_{(0)}, \frac{1}{H_0} P_{f\mu} \frac{1}{H_0} \sigma B^+ \varphi_{(0)}) \\
&= -\frac{1}{4} (A_\mu^- \frac{1}{H_0} \sigma B^+ \varphi_{(0)}, A_\mu^- \frac{1}{H_0} P_{f\nu} \frac{1}{H_0} P_{f\nu} \frac{1}{H_0} \sigma B^+ \varphi_{(0)}) \\
&= -\frac{1}{4} \int_{D^4} \frac{d^3 k_1 d^3 k_2}{(2\pi)^6 \omega_1 \omega_2} \frac{1}{E_2} \frac{1}{E_2} \frac{1}{E_2} \frac{1}{E_1} |k_2|^2 \langle \sigma_2 \sigma_1 \rangle (e_2 \cdot e_1) \\
&= -\frac{1}{4} \int_{D^4} \frac{d^3 k_1 d^3 k_2}{(2\pi)^6 \omega_1 \omega_2} \frac{1}{E_2^3} \frac{1}{E_1} 2|k_1| |k_2|^3 (\hat{k}_1 \cdot \hat{k}_2)
\end{aligned}$$

36.

$$\begin{aligned}
(\Phi_{12}^\mu, H_1 \Phi_2^\mu) &= -\frac{1}{4} \left(\frac{1}{H_0} (P_f \cdot A^+) \frac{1}{H_0} \sigma B^+ \varphi_{(0)}, (P_f \cdot A^+) \frac{1}{H_0} P_{f\mu} \frac{1}{H_0} P_{f\mu} \frac{1}{H_0} \sigma B^+ \varphi_{(0)} \right) \\
&= -\frac{1}{4} \int_{D^4} \frac{d^3 k_1 d^3 k_2}{(2\pi)^6 \omega_1 \omega_2} \frac{1}{E_{12}} \frac{1}{E_2} \frac{1}{E_2} \frac{1}{E_2} (k_2 \cdot e_1) |k_2|^2 ((k_2 \cdot e_1) \langle \sigma_2 \sigma_2 \rangle \frac{1}{E_2} + (k_1 \cdot e_2) \langle \sigma_2 \sigma_1 \rangle \frac{1}{E_1}) \\
&= -\frac{1}{4} \int_{D^4} \frac{d^3 k_1 d^3 k_2}{(2\pi)^6 \omega_1 \omega_2} \frac{1}{E_{12}} \frac{1}{E_2^3} |k_2|^2 \left(\frac{2|k_2|^4 (1 - (\hat{k}_1 \cdot \hat{k}_2)^2)}{E_2} + \frac{-|k_1|^2 |k_2|^2 (1 - (\hat{k}_1 \cdot \hat{k}_2)^2)}{E_1} \right)
\end{aligned}$$

37.

$$\begin{aligned}
(\Phi_{14}^\mu, H_1 \Phi_2^\mu) &= \frac{1}{8} \left(\frac{1}{H_0} A^+ A^+ \varphi_{(0)}, \sigma B^+ \frac{1}{H_0} P_{f\mu} \frac{1}{H_0} P_{f\mu} \frac{1}{H_0} \sigma B^+ \varphi_{(0)} \right) \\
&= \frac{1}{8} \int_{D^4} \frac{d^3 k_1 d^3 k_2}{(2\pi)^6 \omega_1 \omega_2} \frac{1}{E_{12}} \frac{1}{E_2} \frac{1}{E_2} \frac{1}{E_2} |k_2|^2 \langle \sigma_2 \sigma_1 \rangle (e_1 \cdot e_2 + e_2 \cdot e_1) \\
&= \frac{1}{8} \int_{D^4} \frac{d^3 k_1 d^3 k_2}{(2\pi)^6 \omega_1 \omega_2} \frac{1}{E_{12}} \frac{4|k_1| |k_2|^3 (\hat{k}_1 \cdot \hat{k}_2)}{E_2^3}
\end{aligned}$$

38.

$$\begin{aligned}
(\Phi_{16}^\mu, H_1 \Phi_2^\mu) &= \mathcal{E}_4 = -\frac{1}{16} \left(\frac{1}{H_0} \sigma B^+ \frac{1}{H_0} \sigma B^+ \varphi_{(0)}, \sigma B^+ \frac{1}{H_0} P_{f\mu} \frac{1}{H_0} P_{f\mu} \frac{1}{H_0} \sigma B^+ \varphi_{(0)} \right) \\
&= -\frac{1}{16} \int_{D^4} \frac{d^3 k_1 d^3 k_2}{(2\pi)^6 \omega_1 \omega_2} \frac{1}{E_{12}} \frac{1}{E_2} \frac{1}{E_2} \frac{1}{E_2} |k_2|^2 \left(\langle \sigma_2 \sigma_1 \sigma_2 \sigma_1 \rangle \frac{1}{E_1} + \langle \sigma_2 \sigma_1 \sigma_1 \sigma_2 \rangle \frac{1}{E_2} \right) \\
&= -\frac{1}{16} \int_{D^4} \frac{d^3 k_1 d^3 k_2}{(2\pi)^6 \omega_1 \omega_2} \frac{1}{E_{12}} \frac{1}{E_2^3} |k_2|^2 \left(\frac{-2|k_1|^2 |k_2|^2 (1 - (\hat{k}_1 \cdot \hat{k}_2)^2)}{E_1} + \frac{4|k_1|^2 |k_2|^2}{E_2} \right)
\end{aligned}$$

As is seen above, integrands in each terms are functions of $|k_1|, |k_2|, (\hat{k}_1 \cdot \hat{k}_2)$. Changing variables $|k_1|, |k_2|, (\hat{k}_1 \cdot \hat{k}_2)$ to $r_1 \geq 0, r_2 \geq 0, X = \cos \theta, 0 \leq \theta < \pi$, respectively, it is seen that

$$\begin{aligned}
F(\Lambda/m) &= \int_{D^4} \frac{d^3 k_1 d^3 k_2}{(2\pi)^6 \omega_1 \omega_2} f(|k_1|, |k_2|, (\hat{k}_1 \cdot \hat{k}_2)) \\
&= \frac{2\pi^2}{(2\pi)^6} \int_{-1}^1 dX \int_{\kappa/m}^{\Lambda/m} dr_1 \int_{\kappa/m}^{\Lambda/m} dr_2 r_1 r_2 f(r_1, r_2, X).
\end{aligned}$$

We see that

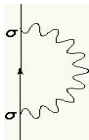
$$\frac{dF(\Lambda/m)}{d(\Lambda/m)} = \frac{2\pi^2}{(2\pi)^6} (\Lambda/m) \int_{-1}^1 dX \int_{\kappa/m}^{\Lambda/m} dr r [f(\Lambda/m, r, X) + f(r, \Lambda/m, X)]. \quad (18)$$

To see the asymptotic behavior of $F(\Lambda/m)$, we estimate the right hand side of (18). Then we can see that

$$\lim_{\Lambda \rightarrow \infty} \frac{|(\Phi_i^\mu, H_j \Phi_k^\mu)|}{\sqrt{\Lambda/m}} < \infty, \quad \mu = 1, 2, 3,$$

where $(i, j, k) \neq (1, 8, 1), (2, 8, 2), (16, 1, 2)$. In the case of $(i, j, k) = (1, 8, 1), (2, 8, 2)$, each term is divided into two integrals. Although each integral diverges as $(\Lambda/m)^2$ as $\Lambda \rightarrow \infty$, cancelation happens. See Fig. 15 and 16.

Then the terms $(i, j, k) = (1, 8, 1), (2, 8, 2)$ diverge as $[\log(\Lambda/m)]^2$. Finally we can directly see that the term $(\Phi_{16}^\mu, H_1 \Phi_2^\mu)$ diverges as $(\Lambda/m)^2$. Then the proof is complete. \square

Remark 2.4 Informally we can see that the diagram  behaves as $(\Lambda/m)^2$.

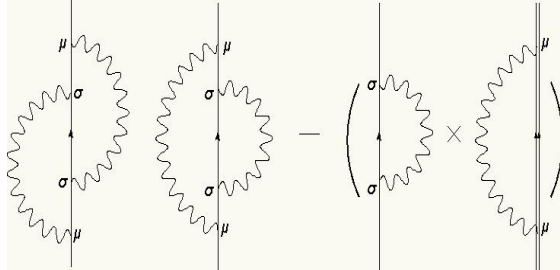


Figure 15: $(\Phi_1^\mu, H_8\Phi_1^\mu)$

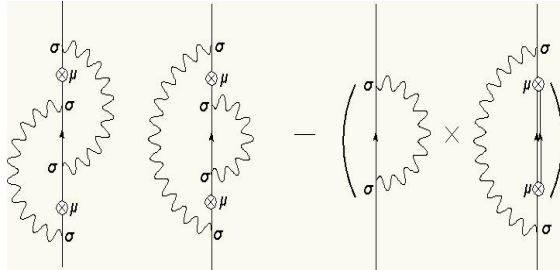


Figure 16: $(\Phi_1^\mu, H_8\Phi_1^\mu)$

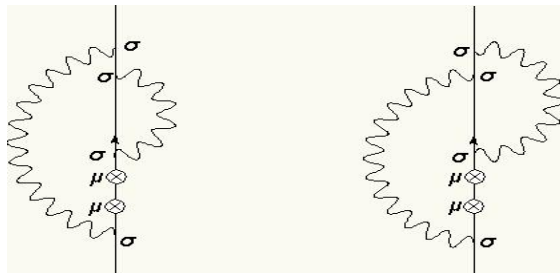
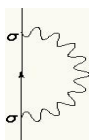


Figure 17: $(\Phi_{16}^\mu, H_1\Phi_2^\mu)$

Terms $(\Phi_1^\mu, H_8\Phi_1^\mu)$, $(\Phi_2^\mu, H_8\Phi_2^\mu)$ and $(\Phi_{16}^\mu, H_1\Phi_2^\mu)$ include diagram . Although, as is seen in Fig. 15, 16 and 17, $(\Phi_1^\mu, H_8\Phi_1^\mu)$ and $(\Phi_2^\mu, H_8\Phi_2^\mu)$ have counter terms, $(\Phi_{16}^\mu, H_1\Phi_2^\mu)$ does not.

Acknowledgements. We thank Tetsuya Hattori and Takashi Hara for helpful comments. K. R. I. thanks Grant-in-Aid for Science Research (C) 15540222 from MEXT and F. H. thanks Grant-in-Aid for Science Research (C) 15540191 from MEXT.

References

- [1] T. Chen, Operator-theoretic infrared renormalization and construction of dressed 1-particle states in non-relativistic QED, mp-arc 01-301, preprint, 2001.
- [2] J. Fröhlich, Existence of dressed one electron states in a class of persistent models, *Fortschritte der Physik* **22** (1974), 159–198.
- [3] C. Hainzl and R. Seiringer, Mass renormalization and energy level shift in non-relativistic QED, *Adv. Theor. Math. Phys.* **6** (2002), 847-871.
- [4] F. Hiroshima, Fiber Hamiltonians in nonrelativistic quantum electrodynamics, in preparation.
- [5] F. Hiroshima and K. R. Ito, Mass renormalization in non-relativistic quantum electrodynamics with spin 1/2, mp-arc 04-406, preprint 2004.
- [6] F. Hiroshima and H. Spohn, Mass renormalization in nonrelativistic QED, *J. Math. Phys.* **46** (2005) 042302.
- [7] E. Lieb and M. Loss, A bound on binding energies and mass renormalization in models of quantum electrodynamics, *J. Stat. Phys.* **108**, (2002) 1057–1069.
- [8] H. Spohn, Effective mass of the polaron: A functional integral approach, *Ann. Phys.* **175** (1987), 278–318.